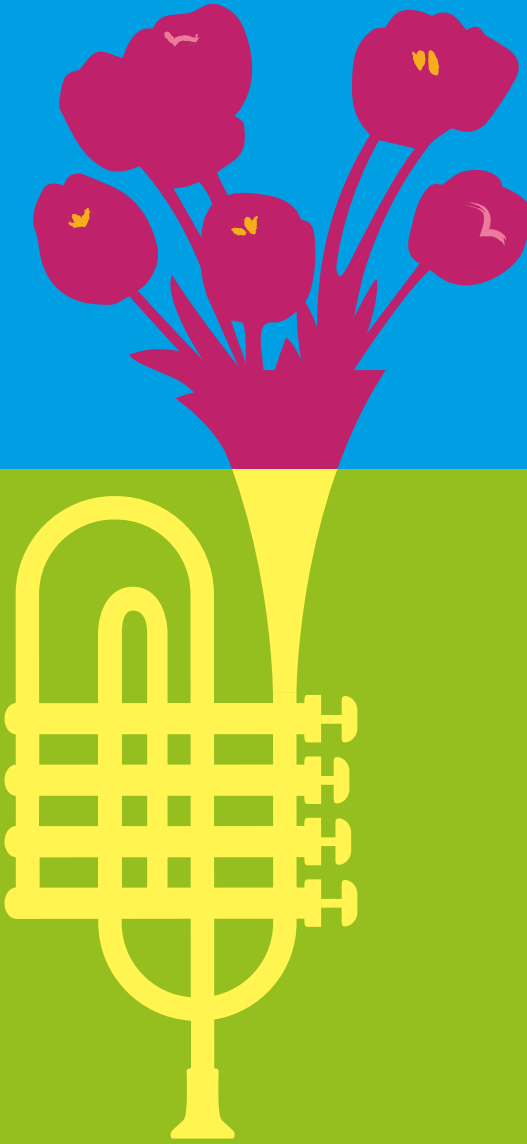


CLOSING
DATE FOR
ENTRIES:
SUNDAY
1 JUNE



Flower Show Schedule 2025

Saturday 7 –
Sunday 8 June
2025

Brockwell Park

Contents

- 3 Welcome!
- 4 2024 Winners and Trophies

Regulations

- 5 Eligibility
 - Entries
 - Ownership of exhibits
- 6 Liability and loss
 - Staging of exhibits
 - Naming exhibits
 - Opening times
 - Removal of exhibits
- 7 Sale of produce
 - Judging
 - Protest
 - Floral arrangements
 - Flower definitions
- 8 Prizes
- 9 Trophies and Awards
 - Special Awards

Flower Schedule

- 10 A: Flower and pot plant exhibits
- 12 B: Cacti and succulents exhibits
- 13 C: Bonsai exhibits
- 14 D: Fruit and vegetables exhibits
- 15 E: Floral art exhibits
- 16 F: Children's exhibits
- 17 G: Domestic exhibits
 - H: Handicraft exhibits
- 18 Recipe
- 20 Country Show competitions
- 19 Application notes
- 20 Postal Entry form

Welcome!

Welcome to this year's edition of the Lambeth Country Show Flower Show, proudly presented in partnership with the Lambeth Horticultural Society (LHS). This year's Flower Show Schedule features an exciting 83 categories spanning flowers, pot plants, fruits, vegetables, handicrafts, and much more.

Alongside the vibrant horticultural displays inside the main marquee, we're delighted to welcome back the ever-popular Scarecrow and Recycled Garden competitions. Entry is free, and winners in each category will receive a £150 voucher.

Also returning is the crowd-favourite Vegetable Sculptures competition. Past creations like "The Last of Asparag-us starring Pear-dro Pas-Kale", "Carrot Southdate", "Frida Kale-O", and "Nigel Cabb-age from the Refarm Party" have captured imaginations and laughter alike – and we can't wait to see what this year brings.

As always, we're proud to support local Lambeth food banks and kindly encourage you to bring along non-perishable food items to the Flower Show Marquee on either day of the event.

If you've been thinking about getting involved, this could be your year! Whether as an entrant or a visitor, we'd love to see you in June.

LCS Team x

2024 Winners and Trophies

- Cup for best exhibit in cut flower (classes 1–11)
Sarah Plescia
- Award for best rose (classes 5–7)
Sue Wallace
- Rose bowl for best exhibit (classes 12–22)
Wilson Yau
- Shield for best exhibit in cacti and succulent classes (classes 23–33)
Valerie Lambert
- Lambeth Council cup (class 33)
Charlotte Dark
- Cup for best exhibit in bonsai (classes 34–40)
Robert Edgar
- Cup for best tray of vegetables of salad vegetables (classes 57 and 58)
Sarah Plescia
- Cup for best exhibit in vegetable classes excluding classes 57 and 58
Dave Bell
- Cup for best exhibit in floral art (classes 63–68)
Charlotte Dark
- Cup for best exhibit in children's (classes 69–72)
Pamela Barnes
- Cup for best exhibit in domestic (classes 73–78)
Dave Bell
- Cup for best exhibit in handicrafts (classes 81–85)
Felan Ragana
- Banksian Medal
Sarah Plescia

Regulations

- The rules applied by the show organisers are those laid down in the code of rules of the Royal Horticultural Society and the NAFAS competitions Manual third edition 2015.
- Decisions made by the Flower Show Manager are final.

1 Eligibility

All classes of the competition are open to amateur exhibitors only.

2 Entries

Only one entry per class is allowed. Lambeth Council or the Flower Show Manager reserve the right to refuse any entry and are not required to provide a reason or explanation. Exhibitors must report to the Flower Show Manager's office, located in the Flower Show marquee, to collect an exhibitor's card which must then be placed face down in front of the exhibit after checking that the description on the card is accurate.

Applications must be submitted by Sunday 1 June 2025 unless otherwise stated.

Online: www.lambethcountryshow.co.uk/getinvolved

By post / in person to:

LHS Treasurer
72 Thurlestone Road
London SE27 0PD

Late entries are only accepted at the discretion of the Flower Show Manager, and will be charged at £2 per entry on the day, unless otherwise stated.

3 Ownership of exhibits

All exhibits must be the property of and grown by the exhibitor for at least two months prior to the show, excluding entries for Section E. All exhibits should be exhibited in the name of an individual.

Regulations

4 Liability and loss

All exhibits, cases, containers and other personal property will be lodged in the marquee at the risk of the exhibitor. Every care will be taken to ensure their safety but neither Lambeth Council nor the Flower Show Manager will deem itself liable for compensation for loss or damage from any cause.

5 Staging of exhibits

The Flower Show Manager will allocate all exhibition space. All exhibits must be staged between 6:30 pm–7 pm on Friday 6 June 2025 and 8 am–12 noon on Saturday 7 June 2025. Exhibitors must observe the directions of the Flower Show Manager and stewards and accept full responsibility for the proper staging and safety of their exhibits. Exhibitors must stage their exhibits themselves and must provide their own containers. Any exhibit, which does not conform to the regulations, shall be disqualified and the judge will write on the entry card 'Not according to schedule' (NAS).

6 Naming exhibits

All exhibits should be correctly named where possible. Entries where errors have been made in naming the exhibit will not be disqualified, but the judges should regard correctness and clearness of naming as telling in favour of an exhibit in a close competition.

7 Opening times

The Flower Show Marquee will open to the public on Saturday 7 June 2025 from 2 pm–8 pm and on Sunday 8 June 2025 from 12 noon–6 pm. Please note that the marquee must be vacated by 6 pm on Sunday .

8 Removal of exhibits

Exhibits must not be removed from the show until 6:15 pm on Sunday 8 June 2025. At 6:15 pm every exhibitor, or a representative with the exhibitor's card, must be present to collect their exhibit.

Regulations

9 Sale of produce

Produce and any material not removed by 6:30 pm may be deemed to be available for sale on Sunday evening.

10 Judging

No exhibitors are allowed into the Flower Show Marquee while the judging is in progress. Judging will take place between 12 noon and 1:45 pm on Saturday 7 June 2025.

11 Protest

Any protest must be made in writing and delivered to the Flower Show Manager within one hour of the opening of the show to the public, together with a deposit of £5. This sum is returnable in the event of the protest being upheld. A committee of people drawn from local horticultural societies will investigate the protest.

12 Floral arrangements

Exhibitors will be allowed to use accessories, drapes etc. in Section E. Flowers and plant materials must predominate, but do not need to have been grown by the exhibitor.

13 Flower definitions

For the purposes of this show the following definitions will apply:

- A cactus is a succulent plant characterised by the presence of areolas: an areola being a small cushion of woolly-felt or hair from which spines arise.
- A houseplant is a plant which can be grown in a living room and which remains attractive throughout the year. Succulents qualify, but plants, which die down or lose their leaves, do not.
- Succulents are plants adapted in stem and leaves to conditions of drought, usually with fleshy leaves and few breathing pores.
- Plant material – fresh; any living plant material.
- Natural – fresh and or dried plant material.

14 Prizes

Prizes will be awarded in accordance with the show schedule, but any prize may be withheld or modified if judges decide the exhibits are unworthy of the prize offered.

Prize money of £2 for 1st place, £1.50 for 2nd place and £1.25 for 3rd place will be offered in most classes apart from the following: For the Floral Art classes the prize will be £3 for 1st place, £2.50 for 2nd place and £2 for 3rd place.

Prize money will be available at the Flower Show Manager's base located in the Flower Show Marquee, between 6 pm and 6:45 pm on Saturday 7 June and 2 pm and 5 pm on Sunday 8 June 2025.

Trophies and Awards

- Cup for best exhibit in cut flower (classes 1–11)
- Award for best rose (classes 3–6)
- Rose bowl for best exhibit (classes 12–22)
- Shield for best exhibit in cacti and succulent classes (classes 23–33)
- Lambeth Council cup (class 33)
- Cup for best exhibit in bonsai (classes 34–40)
- Cup for best tray of vegetables or salad vegetables (classes 57 and 58)
- Cup for best exhibit in vegetable classes (excluding classes 57 and 58)
- Cup for best exhibit in floral art (classes 63–68)
- Cup for best exhibit in children’s classes (classes 69–72)
- Cup for best exhibit in domestic classes (classes 73–78)
- Cup for best exhibit in handicrafts (classes 79–83)
- Banksian Medal

Special Awards – Banksian Medal

This award is presented by the Royal Horticultural Society (RHS) to the winner of the largest total amount of prize money in the horticultural classes. In accordance with the RHS rules, winners in the two years preceding this year’s show (Charlotte Dark, 2023 and Sarah Plescia 2024) are not eligible to receive the award in 2025.

Prize giving will take place at 2 pm on Sunday 8 June 2025 in the Flower Show Marquee.

Flower Show Schedule

Section A. Flower and pot plant exhibits

- Class 1 Vase of mixed annuals
- Class 2 Vase of flowering shrubs
- Class 3 Vase of one specimen HT rose
- Class 4 Vase of three HT roses
- Class 5 Vase of floribunda roses
- Class 6 Vase of any number of stems, any rose
- Class 7 Vase of perennials including bulb, corm or tuber, one kind
- Class 8 Vase of sweet peas
- Class 9 Vase of mixed perennials
- Class 10 Vase of mixed garden flowers arranged for effect
- Class 11 Vase of mixed foliage
- Class 12 One flowering pot plant, in a pot no larger than 20 cm in diameter excluding saintpaulias
- Class 13 One flowering pot plant, in a container not exceeding 25 cm in diameter excluding saintpaulias, pelargonium and fuchsia
- Class 14 One fuchsia in a container not exceeding 25 cm in diameter
- Class 15 One pelargonium in a container not exceeding 25 cm in diameter
- Class 16 One planted hanging basket, up to 45 cm in diameter
- Class 17 A collection of plants growing in a trough
- Class 18 One foliage pot plant in a container not larger than 20 cm in diameter

Flower Show Schedule

- Class 19 One foliage pot plant in a container not larger than 25 cm in diameter
- Class 20 One houseplant, climbing or trailing
- Class 21 One saintpaulia
- Class 22 Group of indoor plants arranged for decorative effect, to cover space not larger than 45 cm square at the base. Foliage may extend not more than 15 cm beyond the base in any direction except upwards. No accessories allowed.

Flower Show Schedule

Section B. Cacti and succulents exhibits

- Class 23 One cactus, in a container not exceeding 8 cm in diameter
- Class 24 One cactus, in a container not exceeding 12.5 cm in diameter
- Class 25 One cactus, in a container not exceeding 25 cm in diameter
- Class 26 Three cacti of different species, in separate containers not exceeding 10.5 cm in diameter
- Class 27 Three cacti of different species, in separate containers not exceeding 25 cm in diameter
- Class 28 One succulent other than cactus, in a container not exceeding 8 cm in diameter
- Class 29 One succulent other than cactus, in a container not exceeding 12.5 cm in diameter
- Class 30 One succulent other than cactus, in a container not exceeding 25 cm in diameter
- Class 31 Three succulents other than cacti, of different species, in separate containers not exceeding 10.5 cm in diameter
- Class 32 Three succulents other than cacti, of different species, in separate containers not exceeding 25 cm in diameter
- Class 33 Group of succulents, not excluding cacti, arranged for decorative effect, to cover space not larger than 45 cm square at the base. Foliage may extend not more than 15 cm beyond the base in any direction except upwards. No ornaments allowed.

Flower Show Schedule

Section C. Bonsai exhibits (trees in shallow containers)

Age of trees should be given when known.

- Class 34 Any deciduous tree, British grown, including ginkgo, excluding other deciduous conifers
- Class 35 Any conifer tree, British grown, excluding ginkgo
- Class 36 Rock planting – tree / trees must be planted on or in the rock
- Class 37 Rock planting – root over rock or clasping rock
- Class 38 Group planting – any number of trees in a single container, not to exceed 40cm
- Class 39 Any evergreen tree, which is not a conifer
- Class 40 Mame bonsai – tree and pot to pass under 15 cm bridge

Flower Show Schedule

Section D. Fruit and vegetable exhibits

- Class 41 Potatoes, white, three of any one variety
- Class 42 Potatoes, coloured, three of any one variety
- Class 43 Carrots, three short or stump rooted
- Class 44 Beetroots, three round, 7.5 cm tops
- Class 45 Radishes, seven
- Class 46 Broad beans, seven pods
- Class 47 Mangetout, seven pods
- Class 48 Courgettes, three
- Class 49 Peas, seven pods
- Class 50 Rhubarb, five sticks
- Class 51 Asparagus, five sticks
- Class 52 Cabbage, one with roots
- Class 53 Spinach or spinach beet including chard, nine leaves
- Class 54 Lettuce, one with roots
- Class 55 Any other vegetable not classified in the foregoing classes; space allowed 60 cm by 30 cm (maximum two)
- Class 56 Spring onions, seven stems
- Class 57 Collection of four distinct kinds of vegetables, space allowed 60 cm by 60 cm numbers to be staged as for classes 41 to 54
- Class 58 Collection of salading, salad vegetables or edible flowers, not exceeding four kinds, space allowed 45 cm by 45 cm

Flower Show Schedule

- Class 59 Dish of soft fruit, nine berries of one kind
- Class 60 Dish of soft fruit, nine strings of currants of one kind
- Class 61 Dish of any other fruit
- Class 62 Culinary herbs, one vase of three kinds, three stems of each

Section E. Floral art exhibits

Open plan tables, no alcoves will be provided, the height is unlimited unless otherwise stated. Exhibitors will be allowed to use accessories, drapes, etc. Flowers and plant materials must predominate, but the exhibitor does not need to have grown them.

Natural plant materials may be used.

Flowers must be arranged at the show without assistance.

Entries made after Sunday 1 June 2025 cannot be accepted.

Theme 'Films (featuring south London)'

For all exhibits the dimensions of the space allowed is given beneath the description.

Exhibits are to be staged against a white background on open tabling 75 cm from the ground.

Class 63 'We Live In Time'

Novice class for anyone who has not won a first prize at a Lambeth Horticultural Society or NAFAS flower arranging competition.

60 × 60 cm × unlimited (w × d × h)

Flower Show Schedule

- Class 64 'The Lavender Hill Mob'
60 × 60 cm × unlimited (w × d × h)
- Class 65 'Rye Lane'
A petite exhibit.
25 x 25 x 25 cm (w × d × h)
- Class 66 'Miniature: A Clockwork Orange'
A miniature exhibit.
10 × 10 × 10 cm (w × d × h)
- Class 67 'A Vegetable Character'
Judged by online public vote.
- Class 68 Exhibitor's own choice using two different types of flowers
60 × 60 cm × unlimited (w × d × h)
Please name your exhibit.

Section F. Children's exhibits

- Class 69 A vegetable animal (5–15 years)
- Class 70 A painting or drawing on a horticultural theme (ages 4–7 years)
- Class 71 A painting or drawing on a horticultural theme (ages 8–11 years)
- Class 72 A painting or drawing on a horticultural theme (ages 12–14 years)

Flower Show Schedule

Section G. Domestic exhibits

- Class 73 One jar of homemade chutney
(300–500 g clear, labelled glass jar)
- Class 74 One jar of homemade jam
(300–500 g clear, labelled glass jar)
- Class 75 Floury baps, own recipe (half dozen to be displayed)
- Class 76 Three decorated cup cakes, judged solely for decoration,
own recipe
- Class 77 Malt loaf, own recipe (use a 2 lb loaf tin)
- Class 78 Coffee crumb cake, recipe overleaf, exhibit whole cake

Please label baked goods if they contain allergens:

celery, cereals containing gluten, crustaceans, eggs,
fish, lupin, milk, molluscs, mustard, peanut, sesame,
soybeans, sulphur dioxide and sulphites, treenuts.

Section H. Handicraft exhibits

Articles must have been made since the 2024 show.

- Class 79 Article of hand knitted wear
- Class 80 Article of machine or hand embroidery
- Class 81 Exhibit of handicraft (type and size of exhibit to be
described on entry form)
- Class 82 'Community'
Photographic prints up to A5, mounted on card or paper
- Class 83 Painting or drawing up to A3, own choice

Class 78 Recipe - Coffee crumb cake

Cake:

- 160 g plain flour
- 1 tsp. baking powder
- 1/4 tsp. bicarbonate of soda
- 1/4 tsp. salt
- 120 g unsalted butter at room temperature
- 150 g granulated sugar
- 2 large eggs, at room temperature
- 2 tsp. pure vanilla extract
- 120 g full-fat sour cream, at room temperature
- 2 tbsp. (30ml) milk (any kind, dairy or non-dairy, is fine)

Cinnamon crumb mixture:

- 130 g dark or light brown sugar
- 90 g plain flour
- 2 1/2 tsp. ground cinnamon
- 90 g unsalted butter, cold and cubed

Vanilla icing (optional):

- 120 g icing sugar, sifted
- 1/2 tsp. pure vanilla extract
- 2 tbsp. (30ml) double cream or milk

Method:

- 1 Preheat oven to Gas Mark 4 / 350° F / 180° C. Line a 20 cm square pan with lightly greased parchment paper or directly grease the pan.
- 2 Make the cinnamon crumb mixture: Combine the brown sugar, flour, and cinnamon together in a medium bowl. Cut in the chilled butter with a pastry cutter or two forks (or use a food processor or your hands) until the mixture is in pea-sized crumbs. Some larger crumbs are OK. You'll have a little over 2 cups of crumb. Refrigerate until step 5.
- 3 Make the cake: Whisk the flour, baking powder, baking soda, and salt together in a large bowl. Set aside. In a large bowl using an electric whisk, beat the butter and sugar together until smooth and creamy. Scrape down the sides and add the eggs and vanilla, and beat until combined. Beat in the sour cream to combine. Mixture will be lumpy.

- 4 Add the flour mixture to the wet ingredients, and beat on low speed until just combined. Finally, beat in the milk. Do not overmix this batter. The batter will be thick.
- 5 Carefully spread about half of the batter into the prepared pan. Sprinkle about half of the crumb mixture evenly on top. Carefully spread the remaining batter on top. This can be a little tricky since you're spreading thick batter on top of crumbs, but do your best. Use a spoon or small offset spatula. Sprinkle the remaining crumb mixture evenly on top.
- 6 Bake for around 35–40 minutes or until the cake is baked through. To test for doneness, insert a toothpick into the center of the cake. If it comes out clean, it is done. Allow cake to cool in the pan set on a wire rack for 15 minutes.
- 7 Make the icing: Whisk all of the icing ingredients together. Drizzle over warm cake.
- 8 Lift the cake from the pan using the overhang parchment paper around the sides and slice into squares. Or, if you didn't use parchment, slice directly in the pan. Serve cake warm or at room temperature.
- 9 Cover leftovers tightly and store at room temperature for up to 3 days or in the refrigerator for up to 1 week.

Make ahead & freezing instructions:

The cake can be baked and covered tightly at room temperature overnight. Make the glaze the next morning and drizzle over cake before serving. Cake, with or without icing, can be frozen up to 3 months. Thaw overnight in the refrigerator and bring to room temperature before serving.

Final note:

Please note that the cakes will need to be displayed covered. This is normally done with film, so ensure icing is dry before covering.

Country Show competitions

Judged by the public – voting will close at 10 pm on Sunday 8 June 2025 and the winner will be announced the following week on social media and via our mailing list.

Closing date for entries is Sunday 1 June 2025.

Applications to be made online only:

www.lambethcountryshow.co.uk/getinvolved

Recycled Garden Planting competition

You can use any type of recycled container for your garden; an old wheelbarrow, a shopping crate, a washing up bowl or even an old tyre. You can plant anything from a mini vegetable plot to a flower bed. All successful entries will be displayed over the two days of the show and judged by the public.

Interactive hint: Add in a detailed description of what people are seeing in your garden or add a QR code for people to see a video about how you made it.

Scarecrow competition ‘Scarecrows Without Borders’

This year, we’re celebrating all things global. We want to see scarecrows that represent different countries and cultures. It could be someone famous, a fictional character or a sportsperson.

Interactive twist: Include flags and “Did You Know?” facts about your country and scarecrow on display.

Let’s explore the wonders of the world.

First prize for each competition is £150 in high street vouchers.

Entry is free.

Application Notes

Flower Show entries are free of charge if submitted by Sunday 1 June 2025.

You can apply online: www.lambethcountryshow.co.uk/getinvolved

Alternatively, post your entry to:

LHS Treasurer, 72 Thurlestone Road, London SE27 0PD

Late entries are only accepted at the discretion of the Flower Show Manager and will be charged at £2 per entry on the day.

If you are entering ten or more exhibits, you are entitled to a free parking pass. If this applies to you, please submit your vehicle details when applying. You will be asked to submit your vehicle make and model, as well as its registration number. For security reasons, if we do not have this information in advance, the organisers are not able to permit you access to the park in your vehicle.

Exhibits must be removed between 6:15 pm and 6:30 pm on Sunday 8 June 2025. No liability will be accepted for exhibits left beyond this time.

No vehicle movement is permitted on site for the collection of exhibits until the end of the show, when the site is deemed safe by the Event Safety Officer.

For more information

- visit: www.lambethcountryshow.co.uk/getinvolved
- email: info@lambethcountryshow.co.uk

Flower Show 2025 Postal Entry Form

Please circle the number of the classes you wish to enter:

1	2	3	4	5	6	7	8	9	10
11	12	13	14	15	16	17	18	19	20
21	22	23	24	25	26	27	28	29	30
31	32	33	34	35	36	37	38	39	40
41	42	43	44	45	46	47	48	49	50
51	52	53	54	55	56	57	58	59	60
61	62	63	64	65	66	67	68	69	70
71	72	73	74	75	76	77	78	79	80
81	82	83							

Free parking pass application details (if entering more than ten classes - see page 19):

vehicle make / model _____

vehicle registration _____

I have read and agree to abide by the regulations as printed in the Flower Show Schedule and Regulations:

signed _____

name _____

address _____

phone _____

email _____

Please outline type and size of exhibit if entering class 81:



#LCS25

www.lambethcountryshow.co.uk

info@lambethcountryshow.co.uk

The Lambeth Country show is brought to you by
Lambeth Council, in partnership with Brockwell Live



In association with

