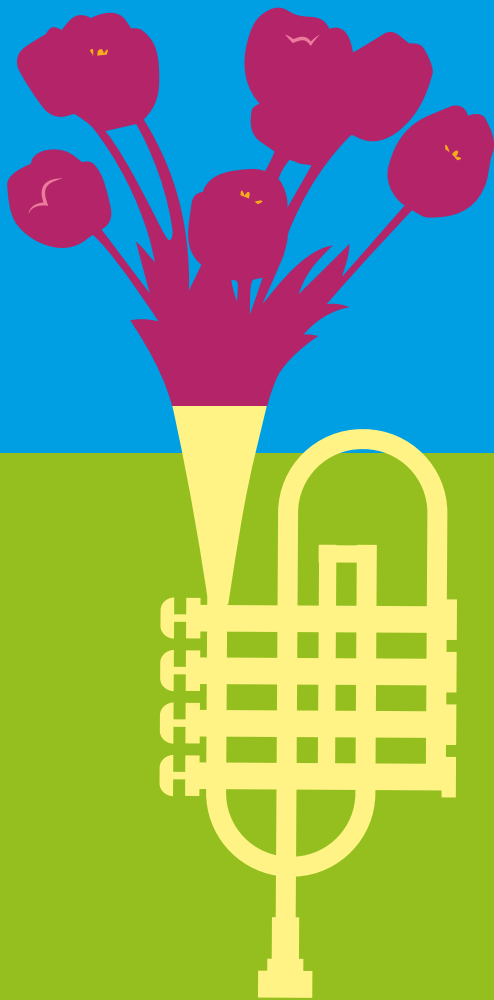


CLOSING
DATE FOR
ENTRIES:
SATURDAY
3 JUNE



Flower Show Schedule 2023

Saturday 10 –
Sunday 11 June

Brockwell Park

Welcome!

Welcome to the 49th edition of the Lambeth Country Show Flower Show, in partnership with the Lambeth Horticultural Society (LHS). We are delighted to collaborate with LHS in presenting this year's Flower Show Schedule, which features 83 different categories, including flowers, pot plants, fruits, vegetables, handicrafts and more.

Aside from the impressive display of horticultural exhibits in the main marquee, this year's event will once again feature the return of the Scarecrow and Recycled Garden competitions, which have been highly praised in the past. Participation in these competitions is free, and the winner of each will receive a £150 voucher.

We are also excited to welcome back the Vegetable Characters competition, with previous winners including Carrot Southdate, Frida Kale-O and "Rih-yam-a pregnant with her and A\$AP Broccoli's baby". With such a variety of competitions, there is something for everyone to enjoy at this year's show.

Additionally, we will be supporting local Lambeth food banks once again and we encourage you to contribute by bringing non-perishable food items to the Flower Show Marquee on either day.

If you have been considering participating in the event for some time, 2023 may be the year for you!

We look forward to seeing you in June and wish you the best of luck.

LCS Team x

2022 Winners and Trophies

- Cup for best exhibit in cut flower (classes 1–11)
John Woolley
- Award for best rose (classes 5–7)
Sue Wallace
- Rose bowl for best exhibit (classes 12–22)
Lucy Hamer
- Shield for best exhibit in cacti and succulent classes (classes 23–33)
Ian Sesnan
- Lambeth Council cup (class 33)
Charlotte Dark
- Cup for best exhibit in bonsai (classes 34–40)
Sue Wallace
- Cup for best tray of vegetables or salad vegetables (classes 57 and 58)
Chase Lorck
- Cup for best exhibit in floral art (classes 63–68)
Sophie Dark
- Cup for best exhibit in children's classes (classes 69–72)
Sophie Dark
- Cup for best exhibit in domestic classes (classes 73–78)
David Bell
- Cup for best exhibit in handicrafts (classes 81–85)
Rachel Judge

Regulations

- The rules applied by the show organisers are those laid down in the code of rules of the Royal Horticultural Society and the NAFAS competitions Manual third edition 2015.
- Decisions made by the Flower Show Manager are final.

1 Eligibility

All classes of the competition are open to amateur exhibitors only.

2 Entries

Only one entry per class is allowed. Lambeth Council or the Flower Show Manager reserve the right to refuse any entry and are not required to provide a reason or explanation. Exhibitors must report to the Flower Show Manager's office, located in the Flower Show marquee, to collect an exhibitor's card which must then be placed face down in front of the exhibit after checking that the description on the card is accurate.

Applications must be submitted by Saturday 3 June 2023 unless otherwise stated.

- Online: www.lambethcountryshow.co.uk/getinvolved
- By post / in person to:

Hon. Secretary Lambeth Horticultural Society
c/o 32 Chatsworth Way,
West Norwood, London SE27 9HN

Late entries are only accepted at the discretion of the Flower Show Manager, and will be charged at £2 per entry on the day, unless otherwise stated.

3 Ownership of exhibits

All exhibits must be the property of and grown by the exhibitor for at least two months prior to the show, excluding entries for Section E. All exhibits should be exhibited in the name of an individual.

Regulations

4 Liability and loss

All exhibits, cases, containers and other personal property will be lodged in the marquee at the risk of the exhibitor. Every care will be taken to ensure their safety but neither Lambeth Council nor the Flower Show Manager will deem itself liable for compensation for loss or damage from any cause.

5 Staging of exhibits

The Flower Show Manager will allocate all exhibition space. All exhibits must be staged between 6:30 pm–7 pm on Friday 9 June 2023 and 8 am–12 noon on Saturday 10 June 2023. Exhibitors must observe the directions of the Flower Show Manager and stewards and accept full responsibility for the proper staging and safety of their exhibits. Exhibitors must stage their exhibits themselves and must provide their own containers. Any exhibit, which does not conform to the regulations, shall be disqualified and the judge will write on the entry card 'Not according to schedule' (NAS).

6 Naming exhibits

All exhibits should be correctly named where possible. Entries where errors have been made in naming the exhibit will not be disqualified, but the judges should regard correctness and clearness of naming as telling in favour of an exhibit in a close competition.

7 Opening times

The Flower Show Marquee will open to the public on Saturday 10 June 2023 from 2 pm–8 pm and on Sunday 11 June from 12 noon–6 pm. Please note that the marquee must be vacated by 6 pm on Sunday 11 June 2023.

8 Removal of exhibits

Exhibits must not be removed from the show until 6:15 pm on Sunday 11 June 2023. At 6:15 pm every exhibitor, or a representative with the exhibitor's card, must be present to collect their exhibit.

Regulations

9 Sale of produce

Produce and any material not removed by 6:30 pm may be deemed to be available for sale on Sunday evening.

10 Judging

No exhibitors are allowed into the Flower Show Marquee while the judging is in progress. Judging will take place between 12 noon and 1:45 pm on Saturday 10 June 2023.

11 Protest

Any protest must be made in writing and delivered to the Flower Show Manager within one hour of the opening of the show to the public, together with a deposit of £5. This sum is returnable in the event of the protest being upheld. A committee of people drawn from local horticultural societies will investigate the protest.

12 Floral arrangements

Exhibitors will be allowed to use accessories, drapes etc. in Section E. Flowers and plant materials must predominate, but do not need to have been grown by the exhibitor.

13 Flower definitions

For the purposes of this show the following definitions will apply:

- A cactus is a succulent plant characterised by the presence of areolas: an areola being a small cushion of woolly-felt or hair from which spines arise.
- A houseplant is a plant which can be grown in a living room and which remains attractive throughout the year. Succulents qualify, but plants, which die down or lose their leaves, do not.
- Succulents are plants adapted in stem and leaves to conditions of drought, usually with fleshy leaves and few breathing pores.
- Plant material – fresh; any living plant material.
- Natural – fresh and or dried plant material.

14 Prizes

Prizes will be awarded in accordance with the show schedule, but any prize may be withheld or modified if judges decide the exhibits are unworthy of the prize offered.

Prize money of £2 for 1st place, £1.50 for 2nd place and £1.25 for 3rd place will be offered in most classes apart from the following: For classes 63, 64, 65, 66 and 67 the prize will be £3 for 1st place, £2.50 for 2nd place and £2 for 3rd place.

Prize money will be available at the Flower Show Manager's base located in the Flower Show Marquee, between 6 pm and 6:45 pm on Saturday 10 June and 2 pm and 5 pm on Sunday 11 June 2023.

Trophies and Awards

- Cup for best exhibit in cut flower (classes 1–11)
- Award for best rose (classes 5–7)
- Rose bowl for best exhibit (classes 12–22)
- Shield for best exhibit in cacti and succulent classes (classes 23–33)
- Lambeth Council cup (class 33)
- Cup for best exhibit in bonsai (classes 34–40)
- Cup for best tray of vegetables or salad vegetables (classes 57 and 58)
- Cup for best exhibit in vegetable classes (excluding classes 57 and 58)
- Cup for best exhibit in floral art (classes 63–68)
- Cup for best exhibit in children’s classes (classes 69–72)
- Cup for best exhibit in domestic classes (classes 73–78)
- Cup for best exhibit in handicrafts (classes 81–85)
- Banksian Medal

Special Awards – Banksian Medal

This award is presented by the Royal Horticultural Society (RHS) to the winner of the largest total amount of prize money in the horticultural classes. In accordance with the RHS rules, winners in the two years preceding this year’s show are not eligible to receive the award in 2023. Due to the coronavirus pandemic, the Banksian Medal was not awarded in either 2020 or 2021.

Prize giving will take place at 2 pm on Sunday 11 June 2023 in the Flower Show Marquee.

Flower Show Schedule

Section A. Flower and pot plant exhibits

- Class 1 Vase of mixed annuals
- Class 2 Vase of dahlia: one stem
- Class 3 Vase of delphiniums: one stem
- Class 4 Vase of flowering shrubs
- Class 5 Vase of three HT roses
- Class 6 Vase of floribunda roses
- Class 7 Vase of one specimen HT rose
- Class 8 Vase of perennials or shrubs, one kind
- Class 9 Vase of sweet peas
- Class 10 Vase of mixed perennials
- Class 11 Vase of mixed garden flowers arranged for effect
- Class 12 One flowering pot plant, in a pot no larger than 12.5 cm in diameter excluding saintpaulias
- Class 13 One flowering pot plant, in a container not exceeding 25 cm in diameter excluding saintpaulias, geranium and fuchsia
- Class 14 One fuchsia in a container not exceeding 25 cm in diameter
- Class 15 One pelargonium in a container not exceeding 25 cm in diameter
- Class 16 One planted hanging basket, 30 cm to 45 cm in diameter
- Class 17 A collection of plants growing in a trough not exceeding 75 cm in length
- Class 18 One foliage pot plant in a container not larger than 12.5 cm in diameter

Flower Show Schedule

- Class 19 One foliage pot plant in a container not larger than 25 cm in diameter
- Class 20 One houseplant, climbing or trailing
- Class 21 One saintpaulia
- Class 22 Group of indoor plants arranged for decorative effect, to cover space not larger than 45 cm square at the base. Foliage may extend not more than 15 cm beyond the base in any direction except upwards. No accessories allowed.

Flower Show Schedule

Section B. Cacti and succulents exhibits

- Class 23 One cactus, in a container not exceeding 8 cm in diameter
- Class 24 One cactus, in a container not exceeding 12.5 cm in diameter
- Class 25 One cactus, in a container not exceeding 25 cm in diameter
- Class 26 Three cacti of different species, in separate containers not exceeding 10.5 cm in diameter
- Class 27 Three cacti of different species, in separate containers not exceeding 25 cm in diameter
- Class 28 One succulent other than cactus, in a container not exceeding 8 cm in diameter
- Class 29 One succulent other than cactus, in a container not exceeding 12.5 cm in diameter
- Class 30 One succulent other than cactus, in a container not exceeding 25 cm in diameter
- Class 31 Three succulents other than cacti, of different species, in separate containers not exceeding 10.5 cm in diameter
- Class 32 Three succulents other than cacti, of different species, in separate containers not exceeding 25 cm in diameter
- Class 33 Group of succulents, not excluding cacti, arranged for decorative effect, to cover space not larger than 45 cm square at the base. Foliage may extend not more than 15 cm beyond the base in any direction except upwards. No ornaments allowed.

Flower Show Schedule

Section C. Bonsai exhibits (trees in shallow containers)

Age of trees should be given when known.

- Class 34 Any deciduous tree, British grown, including ginkgo, excluding other deciduous conifers
- Class 35 Any conifer tree, British grown, excluding ginkgo
- Class 36 Rock planting – tree / trees must be planted on or in the rock
- Class 37 Rock planting – root over rock or clasping rock
- Class 38 Group planting – any number of trees in a single container, not to exceed 40cm
- Class 39 Any evergreen tree, which is not a conifer
- Class 40 Mame bonsai – tree and pot to pass under 15 cm bridge

Flower Show Schedule

Section D. Fruit and vegetable exhibits

- Class 41 Potatoes, white, four of any one variety
- Class 42 Potatoes, coloured, four of any one variety
- Class 43 Carrots, four short or stump rooted
- Class 44 Beetroots, three round, 7.5 cm tops
- Class 45 Radishes, eight
- Class 46 Broad beans, ten pods
- Class 47 Mangetout, ten pods
- Class 48 Courgettes, three
- Class 49 Peas, ten pods
- Class 50 Rhubarb, five sticks
- Class 51 Asparagus, six sticks
- Class 52 Cabbage, one with roots
- Class 53 Spinach or spinach beet including chard, nine leaves
- Class 54 Lettuce, one with roots
- Class 55 Any other vegetable not classified in the foregoing classes; space allowed 60 cm by 30 cm (maximum two)
- Class 56 Spring onions, ten stems
- Class 57 Collection of four distinct kinds of vegetables, space allowed 60 cm by 60 cm numbers to be staged as for classes 41 to 54
- Class 58 Collection of salading, salad vegetables or edible flowers, not exceeding four kinds, space allowed 45 cm by 45 cm

Flower Show Schedule

- Class 59 Dish of soft fruit, twelve berries of one kind
- Class 60 Dish of soft fruit, twelve strings of currants of one kind
- Class 61 Dish of any other fruit
- Class 62 Culinary herbs, one vase of three kinds, three stems of each

Section E. Floral art exhibits

Open plan tables, no alcoves will be provided, the height is unlimited unless otherwise stated. Exhibitors will be allowed to use accessories, drapes, etc. Flowers and plant materials must predominate, but the exhibitor does not need to have grown them.

Natural plant materials may be used.

Flowers must be arranged at the show without assistance.

Entries made after Saturday 3 June 2023 cannot be accepted.

Theme 'The coronation of King Charles III'

For all exhibits the dimensions of the space allowed is given beneath the description.

Exhibits are to be staged against a white background on open tabling 75 cm from the ground.

Class 63 'Let's celebrate!'

An exhibit for a table centre of a coronation party.

Novice class for anyone who has not won a first prize at a Lambeth Horticultural Society or NAFAS flower arranging competition.

60 × 60 cm × unlimited (w × d × h)

Flower Show Schedule

- Class 64 'Head of the Commonwealth'
An exhibit to depict a member country of the Commonwealth;
country to be named.
30 × 30 cm × unlimited (w × d × h)
- Class 65 'The Stumpery at Highgrove'
An exhibit to include a wooden log.
30 × 30 cm × unlimited (w × d × h)
- Class 66 'The Union Jack'
A petite exhibit where red white and blue flowers predominate.
25 × 25 × 37 cm (w × d × h)
- Class 67 'A Jewel in the Crown'
A miniature exhibit.
10 × 10 × 15 cm (w × d × h)
- Class 68 'A Vegetable Character'
Judged by online public vote.

Section F. Children's exhibits

- Class 69 A vegetable animal (5–15 years)
- Class 70 A painting or drawing on a horticultural theme (ages 4–7 years)
- Class 71 A painting or drawing on a horticultural theme (ages 8–11 years)
- Class 72 A painting or drawing on a horticultural theme (ages 12–14 years)

Flower Show Schedule

Section G. Domestic exhibits

- Class 73 One jar of homemade chutney
(300–500 g clear, labelled glass jar)
- Class 74 One jar of homemade jam
(300–500 g clear, labelled glass jar)
- Class 75 Banana loaf (exhibit whole cake, own recipe)
- Class 76 Five round shortbread biscuits (own recipe)
- Class 77 Five cheese scones (own recipe)
- Class 78 Victoria sandwich (exhibit whole cake, use recipe overleaf)

Section H. Handicraft exhibits

Articles must have been made since the 2022 show.

- Class 79 Article of hand knitted wear
- Class 80 Article of machine or hand embroidery
- Class 81 Exhibit of handicraft (type and size of exhibit to be described on entry form)
- Class 82 'A woodland walk'
Photographic prints up to A5, mounted on card or paper
- Class 83 Painting or drawing up to A3, own choice

Recipe – Victoria sandwich

- 100 g (4 oz) butter, softened
- 100g (4 oz) caster sugar
- 2 eggs
- 100 g self-raising flour, sifted
- 45 ml (3 tbsp) jam
- Icing sugar, sifted (optional)

- Method
- 1 Prepare two 10 cm (7 inch) round sandwich tins;
 - 2 Cream together butter and sugar until pale in colour and light and fluffy in texture;
 - 3 Beat in eggs, one at a time adding 15 ml (1 tbsp) flour with each one;
 - 4 Gently fold in remaining flour with a metal spoon;
 - 5 Transfer to prepare tins and smooth tops with knife;
 - 6 Bake at 180 degrees centigrade (350 F) for 25–30 minutes or until well risen, golden brown and firm;
 - 7 Leave to cool for 2–3 minutes; transfer to a wire cooling rack;
 - 8 Strip off paper and leave to cool;
 - 9 When completely cooled, sandwich together with jam;
 - 10 Dust cake with icing sugar to serve.

Country Show competitions

Judged by the public – voting will close at 6 pm on Sunday 11 June and the winner will be announced the following week on social media and via our mailing list.

Closing date for entries is Saturday 3 June 2023.

Applications to be made online only:
www.lambethcountryshow.co.uk/getinvolved

Recycled Garden Planting competition

Last year's virtual winner, Sarah Walker, won first prize with her incredibly creative 'Shade Garden' – a perfect container for shade-loving ferns found dumped on the streets of Streatham.

You can use any type of recycled container for your garden; an old wheelbarrow, a shopping crate, a washing up bowl or even an old tyre. You can plant anything from a mini vegetable plot to a flower bed. All successful entries will be displayed over the two days of the show and judged by the public.

Scarecrow competition 'The Best of Film and Television'

This year, we're celebrating all things 'Film and Television'. We want to see your favourite actors, actresses, fictional characters, film directors, cartoon characters and more.

Think Jack Sparrow, Julia Roberts, Tim Burton, Katniss Everdeen and Winnie-the-Pooh... the list goes on. It's time to go into pre-production and get your thinking caps on.

First prize for each competition is £150 in high street vouchers.
Entry is free.

Application Notes

Flower Show entries are free of charge if submitted by Saturday 3 June 2023.

You can apply online: www.lambethcountryshow.co.uk/getinvolved

Alternatively, post your entry to:

**Hon. Secretary Lambeth Horticultural Society,
c/o 32 Chatsworth Way, West Norwood, London SE27 9HN**

Late entries are only accepted at the discretion of the Flower Show Manager and will be charged at £2 per entry on the day.

If you are entering ten or more exhibits, you are entitled to a free parking pass. If this applies to you, please submit your vehicle details when applying. You will be asked to submit your vehicle make and model, as well as its registration number. For security reasons, if we do not have this information in advance, the organisers are not able to permit you access to the park in your vehicle.

Exhibits must be removed between 6:15 pm and 6:30 pm on Sunday 11 June 2023. Any exhibits left after this time may be deemed as suitable for sale.

No vehicle movement is permitted on site for the collection of exhibits until the end of the show, when the site is deemed safe by the Event Safety Officer.

For more information

- visit: www.lambethcountryshow.co.uk/getinvolved
- email: info@lambethcountryshow.co.uk

Flower Show 2023 Postal Entry Form

Please circle the number of the classes you wish to enter:

1	2	3	4	5	6	7	8	9	10
11	12	13	14	15	16	17	18	19	20
21	22	23	24	25	26	27	28	29	30
31	32	33	34	35	36	37	38	39	40
41	42	43	44	45	46	47	48	49	50
51	52	53	54	55	56	57	58	59	60
61	62	63	64	65	66	67	68	69	70
71	72	73	74	75	76	77	78	79	80
81	82	83							

Free parking pass application details (if entering more than ten classes – see previous page):

vehicle make / model _____

vehicle registration _____

I have read and agree to abide by the regulations as printed in the 2023 Flower Show Schedule and Regulations:

signed _____

name _____

address _____

phone _____

email _____

Please outline type and size of exhibit if entering class 81:



#LCS23

www.lambethcountryshow.co.uk

info@lambethcountryshow.co.uk

Funded and organised by



Lambeth

In association with

