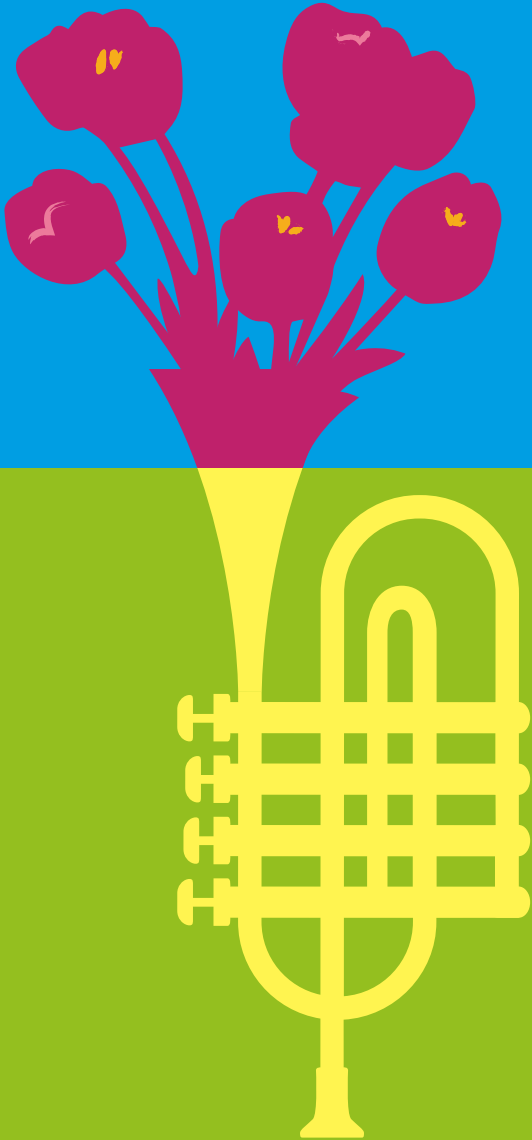


CLOSING
DATE FOR
ENTRIES:
WEDNESDAY
15 JULY



Virtual Flower Show 2020

In association with



Welcome

“ It is with great regret and heavy hearts that we have had to cancel this year’s Lambeth Country Show due to the Coronavirus pandemic. It is something we all look forward to each year that celebrates the vibrancy, diversity and culture of Lambeth and beyond.

However, all is not lost! We have decided to keep the Country Show spirit alive with a virtual event to entertain you – starting with our much loved Flower Show in association with the Lambeth Horticultural Society (LHS).

We welcome you to our very first Virtual Flower Show and are proud to continue our partnership with the LHS in producing this year’s schedule with twenty different online classes to enter. These have been selected to cover all sections of our popular Flower Show including Flower and Pot Plants, Fruit and Vegetables, Children’s Exhibits, Flower Art, Domestic and Handicraft Exhibits.

LHS will be judging Flower and Pot Plants, Fruit and Vegetables, Children’s and Domestic Exhibits. New for this year, we are inviting the public to vote online on certain classes that have traditionally been judged by LHS judges. This year is your chance to cast your votes and decide the winners for the Floral Art and Handicraft Exhibits.

As well as the wonderful array of Flower Show classes, our virtual show will also see the return of our highly acclaimed Scarecrow and Recycled Garden Planting competitions. If you’re feeling inspired after last year’s efforts, entry to these competitions are open to all with first prize vouchers of £50 on offer. As usual, these competitions will be judged by the public.

Our virtual show also welcomes the return of one of our favourite competitions A Vegetable Character (class 14). Previous winners have included ‘Harvest Cocker from Pulp’, ‘The artist formerly known as Quince in his Little Veg Courgette’ and last year’s winner ‘Kaleing Eve’. We love a good pun!

With this huge variety of established favourites, there is something for everyone to get involved with still at this year’s virtual show. If you’ve been thinking about getting involved for a number of years now, maybe this is your year?

We hope to see you online in July and wish you all the best of luck. ”

The Lambeth Country Show Team

2019 Winners and Trophies

- Cup for best exhibit in cut flower (classes 1–11)
Carol Pacifico
- Award for best rose (classes 5–7)
Richard Holdaway
- Rose bowl for best exhibit (classes 12–22)
Sue Wallace
- Shield for best exhibit in cacti and succulent classes (classes 23–33)
David Roy
- Lambeth Council cup (class 33)
Charlotte Dark
- Cup for best exhibit in bonsai (classes 34–40)
Susan Venner
- Cup for best tray of vegetables (class 57) or salad vegetables (class 58)
Lucy Hamer
- Cup for best exhibit in vegetable classes (excluding classes 57 and 58)
Lucy Hamer
- Cup for best exhibit in floral art (classes 65–69)
Charlotte Dark
- Cup for best exhibit in children's classes (classes 71–74)
Sophie Dark
- Cup for best exhibit in domestic classes (classes 75–80)
Anna Lane
- Cup for best exhibit in handicrafts (classes 81–85)
Sarah Ing
- Banksian Medal
Annette Kingsley-Scott

We regret to announce that trophies are not available for winning this year, but will return for our 2021 event.

Entry information

1 Eligibility

All classes of the competition are open to amateur exhibitors only.

2 Entries

Only one entry per class is allowed. The organisers and the LHS reserve the right to refuse any entry and are not required to provide a reason or explanation.

Exhibitors are required to submit their entries online in advance of the event.

Applications must be submitted no later than 11pm on Wednesday 15 July 2020.

Online: www.lambethcountryshow.co.uk/getinvolved

The form will ask for your contact details, which classes you would like to enter and an option to upload your photo. This photo will be of your exhibit and added to our public gallery for sharing, so please make sure you photograph your exhibit as clearly as possible.

If you are unable to access the internet or are not able to upload your photograph correctly, please ask a family member to help you with your application or alternatively please call the Country Show team on 020 7926 7085.

3 Ownership of exhibits

All exhibits must be the property of and grown by the exhibitor.

4 Virtual event times and judging

All exhibits will be made available online on the Lambeth Country Show website from 12 noon on Saturday 18 July.

Results will be shown immediately for all classes judged by LHS.

Voting for all classes that are decided by the public vote will close at 8pm on Sunday 19 July with winners announced the following day.

Regulations

The rules applied by the show organisers are those laid down in the code of rules of the Royal Horticultural Society and the NAFAS competitions Manual third edition 2015.

- Foliage plants – grown primarily for their foliage and have insignificant flowers.
- Flowering plants – grown primarily for their floral effect.
- Fruit and vegetables – all vegetables should be clean and fresh and as far as possible, free from blemishes. Good quality, combined with size suitable for table use, is important.
- Potatoes – aim at uniformity in the size of the tubers. Medium sized, shapely specimens are greatly superior to enormous tubers.
- Carrots and parsnips – should be young and tender, of good shape, colour and size, free from side-shoots. Trim foliage to about 7.5 cm / 3 inches.
- Beetroot – good colour combined with uniformity is important. Show with a tap root.
- Tomatoes – should be firm but ripe and the stalks / calyces should be to be left on.
- Peas and beans – the pods may be as long as the exhibitor likes, provided they are young and the pea pods well filled. Stalks should be left on.
- Onions – large onions are desirable but must be free from blemishes, well ripened and quite hard.
- Fruit – should be of good colour and appearance and look as alike as possible. Don't polish fruit, leave natural bloom intact. Currants, etc. one string is one fruit; other fruit and berries show with stalks.

Regulations

- Dish of fruit – the numbers of fruits per dish of one kind of fruit to be shown as follows: 12 soft fruits, 5 stone fruits, 1 melon, 1 bunch of grapes and 3 of all other fruits.
- Salad vegetable – a vegetable, which is commonly eaten in a salad in a cooked state e.g. beetroot.
- Salading – a vegetable, which is eaten uncooked in a salad.

Floral arrangements

Exhibitors will be allowed to use accessories, drapes etc. in Section E. Flowers and plant materials must predominate but do not need to have been grown by the exhibitor.

Flower definitions

For the purposes of this show the following definitions will apply:

- A cactus is a succulent plant characterised by the presence of areolas: an areola being a small cushion of woolly-felt or hair from which spines arise.
- A houseplant is a plant which can be grown in a living room and which remains attractive throughout the year. Succulents qualify, but plants which die down or lose their leaves do not.
- Succulents are plants adapted in stem and leaves to conditions of drought, usually with fleshy leaves and few breathing pores.
- Plant material – fresh; any living plant material.
- Natural – fresh and / or dried plant material.

Virtual Flower Show Schedule

Section A. Flower and pot plant exhibits including cacti, succulents and bonsai (judged by LHS)

- Class 1 A vase of flowers arranged for effect, to include one single variety, or many varieties. No accessories allowed
- Class 2 A flowering pot plant of any variety in a pot, to not exceed 25 cm in diameter
- Class 3 A collection of any plants growing in a trough, to not exceed 75 cm in length
- Class 4 One foliage pot plant of any variety in a pot, to not exceed 25 cm in diameter
- Class 5 Group of indoor plants arranged for decorative effect to cover space, not larger than 45 cm square at the base (please mark space clearly)
- Class 6 Group of cacti, not excluding succulents arranged for decorative effect, to cover space not larger than 45 cm at the base (please mark space clearly)
- Class 7 Any bonsai tree

Virtual Flower Show Schedule

Section B. Fruit and Vegetable Exhibits (judged by LHS)

- Class 8 5 tomatoes
- Class 9 Collection of four distinct kinds of vegetables,
selected from the following list:
5 potatoes; 4 carrots; 3 beetroots; 10 French beans;
10 runner beans; 5 onions; 10 peas; 10 shallots;
1 cabbage; 1 cucumber; 1 lettuce.
Space allowed 60 cm by 60 cm (please clearly mark space)
- Class 10 Collection of salading, salad vegetables or edible flowers
not exceeding four kinds. Space allowed 45 cm by 45 cm
(please clearly mark space)
- Class 11 Any other vegetable not classified in the above list
(maximum two). Space allowed 60 cm by 30 cm
(please clearly mark space)
- Class 12 Dish of any fruit

Section C. Floral Art Exhibits (judged by the public)

Exhibits should be displayed on open table. Exhibitors are allowed to use accessories, drapes, etc. Flowers and plant materials must predominate but the exhibitor does not need to have grown them. Natural plant materials may be used.

Space allowed D60 cm × W60 cm × height unlimited
(please clearly mark space)

- Class 13 **'As Time Goes By'**
An arrangement of flowers incorporating
flower stems and foliage
- Class 14 **A Vegetable Character**

Virtual Flower Show Schedule

Section D. Children's Exhibits (judged by LHS)

Class 15 Vegetable character (5–15 years)

Class 16 **'My favourite day'**

A painting or drawing (4–14 years; please state age on application, no names should be visible on exhibit)

Section E. Domestic Exhibits (judged by LHS)

Class 17 A decorated cake, up to 30 cm in diameter to be judged solely for decoration

Class 18 A fruit loaf (own recipe to be made in a 1 lb loaf tin), whole cake should be exhibited with one slice cut to display internal texture of cake

Section F. Handicraft Exhibits (judged by the public)

All articles must have been made since the 2019 show.

Class 19 Painting, drawing or photographic exhibit:

'View from my window'

Class 20 An article of handicraft including knitting, crochet, hand or machine embroidery, woodwork, etc.

Country Show competitions

Judged by the public – voting will close at 8pm on Sunday 19 July and the winner will be announced the following day.

Applications must be submitted no later than 11pm on Wednesday 15 July 2020.

Applications to be made online only:

www.lambethcountryshow.co.uk/getinvolved

Recycled Garden Planting competition

Last year's winner, Sarah Collings, won first prize with her incredibly creative 'Home Grown Throne' that turned an old disused chair into a garden of bloom.

As always, there is no specific theme for this competition. You can use any type of recycled container for your garden; an old wheelbarrow, a shopping crate, a washing up bowl or even an old tyre. You can plant anything from a mini vegetable plot to a flower bed. All entries will be displayed in an online gallery and judged by the public.

Scarecrow competition

Why did the scarecrow win an award? Because it was outstanding in its field!

As with the Recycled Garden Competition, there will be no theme for this competition, so the possibilities for your scarecrows are endless. It's time to get your thinking caps on and be as creative as possible.

Congratulations to Clare Thorpe who won the 2019 Scarecrow Competition with her entry 'Size isn't everything'. Clare chose her favourite cartoon villain, Plankton, from SpongeBob SquarePants.

First prize for each competition is £50 in vouchers.

Application Notes

Virtual Flower Show entries are free of charge and must be submitted no later than 11pm on Wednesday 15 July 2020. A photograph of each exhibit is to be included with application.

You can apply online: www.lambethcountryshow.co.uk/getinvolved

For more information visit:

- www.lambethcountryshow.co.uk/getinvolved
- email: countryshow@lambeth.gov.uk
- or call: 020 7926 7085

We want to see you showing off all your entries online too. Maybe your scarecrow will be joining you for lunch? Maybe your vegetable character is helping out with some chores?

Join in with our official hashtags to be featured on our stories

#LCS20

#LambethCountryShow

#VirtualLCS

#LCSintheHouse

Follow us on Instagram

www.instagram.com/lambethcountryshow (@lambethcountryshow)

Follow us on Twitter

www.twitter.com/lbrcountryshow (@lbrcountryshow)

Like us on Facebook

www.facebook.com/lambethcountryshow (@lambethcountryshow)