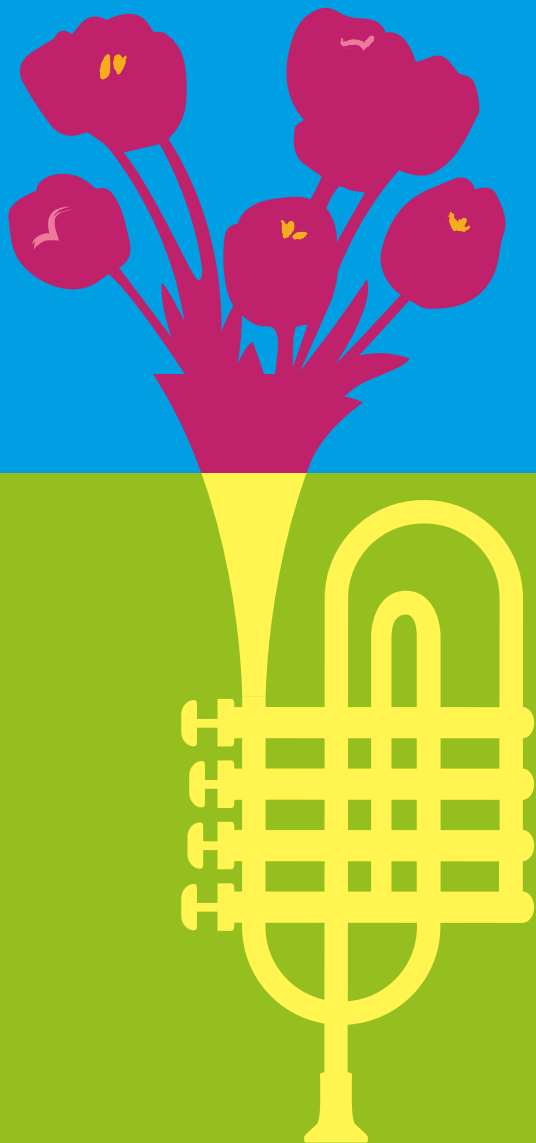


CLOSING  
DATE FOR  
ENTRIES:  
SATURDAY  
14 JULY



# Flower Show Schedule 2018

Saturday 21 –  
Sunday 22 July  
Brockwell Park

# Contents

---

- 3 Welcome!
- 4 2017 Winners and Trophies

## **Regulations**

---

- 5 Eligibility
  - Entries
- 6 Ownership of exhibits
  - Liability and Loss
  - Staging of exhibits
  - Naming exhibits
- 7 Opening times
  - Removal of exhibits
  - Sale of produce
  - Judging
  - Protest
  - Floral arrangements
- 8 Flower definitions
  - Prizes
- 9 Trophies and Awards
  - Special Awards

## **Flower Schedule**

---

- 10 A: Flower and pot plant exhibits
- 11 B: Cacti and succulents exhibits
- 12 C: Bonsai exhibits
- 13 D: Fruit and vegetables exhibits
- 14 E: Floral art exhibits
- 15 F: Children's exhibits
  - G: Domestic exhibits
  - H: Handicraft exhibits
- 16 Recipe
- 17 Lambeth Council competitions
- 18 Application notes
- 19 Entry form

# Welcome!

---

**“ We’d like to take this opportunity to welcome you to the 44<sup>th</sup> edition of the Lambeth Country Show Flower Show Schedule in association with the Lambeth Horticultural Society (LHS).**

The Lambeth Country Show remains one of the best free family events in the south east of England and we are proud to continue our partnership with LHS in producing this year’s Flower Show Schedule with 83 different classes on offer.

As well the wonderful array of the horticultural exhibits in the main marquee, 2018 will also see the return of our highly acclaimed Scarecrow and Recycled Garden competitions. If you’re feeling inspired after last year’s efforts, entry to these competitions are once again free of charge with first prize vouchers of £100 on offer.

2018 also welcomes the return of one of our favourite competitions ‘Vegetable Characters – Class 68’. Previous winners have included ‘Harvest Cocker from Pulp’, politician Boris Johnson and last year’s winner ‘The artist formerly known as Quince in his Little Veg Courgette’. We love a good pun!

With this huge variety of established favourites, there is something for everyone to get involved with at this year’s show. If you’ve been thinking about getting involved for a number of years now, maybe 2018 is your year?!

We will be supporting the Trussell Trust food banks once more again this year. Please show your support by bringing your non-perishable foods to the Flower Show Marquee on either day.

We hope to see you in July and wish you all the best of luck! ”

**The Lambeth Country Show Team**

## 2017 Winners and Trophies

---

- Cup for best exhibit in cut flower (classes 1 to 11)  
**Valerie Lambert**
- Award for best rose (classes 5 to 7)  
**Nick and Sarah Lomax McCusker**
- Rose bowl for best exhibit (classes 12 to 22)  
**Angela Mitchell**
- Shield for best exhibit in cacti and succulent classes  
(classes 23 to 33)  
**Valerie Lambert**
- Lambeth Council Cup (class 33)  
**Benedict Pizzoferro**
- Cup for best exhibit in bonsai (classes 34 to 42)  
**Robert Edgar**
- Cup for best tray of vegetables (class 57)  
or salad vegetables (class 58)  
**Sarah Plescia**
- Cup for best exhibit in vegetable classes  
(excluding classes 57 and 58)  
**The Redingtons**
- Cup for best exhibit in Floral art (classes 65 to 69)  
**Josie Donaldson**
- Cup for best exhibit in children's classes (classes 71 to 74)  
**Sam Noakes**
- Cup for best exhibit in domestic classes (classes 75 to 80)  
**Sharon Rhys-Davies**
- Cup for best exhibit in handicrafts (classes 81 to 85)  
**Cas Baker**
- Banksian Medal  
**Steven Ullah**

# Regulations

---

- The rules applied by the show organisers are those laid down in the code of rules of the Royal Horticultural Society and the NAFAS competitions manual, third edition 2015.
- Decisions made by the Flower Show Manager are final.

## **1 Eligibility**

All classes of the competition are open to amateur exhibitors only.

## **2 Entries**

Only one entry per class is allowed. Lambeth Council or the Flower Show Manager reserves the right to refuse any entry and are not required to provide a reason or explanation. Exhibitors must report to the Flower Show Manager's office, located in the Flower Show marquee, to collect an exhibitor's card which must then be placed face down in front of the exhibit after checking that the description on the card is accurate.

**Applications must be submitted by  
Saturday 14 July 2018**

Online:

**[www.lambethcountryshow.co.uk/getinvolved](http://www.lambethcountryshow.co.uk/getinvolved)**

By post / in person to:

**Hon. Secretary  
Lambeth Horticultural Society  
c/o 32 Chatsworth Way  
West Norwood  
London SE27 9HN**

Late entries are only accepted at the discretion of the Flower Show Manager, and will be charged at £2 per entry on the day.

# Regulations

---

## 3 Ownership of exhibits

All exhibits must be the property of and grown by the exhibitor for at least two months prior to the show, excluding entries for Section E. All exhibits should be exhibited in the name of an individual.

## 4 Liability and Loss

All exhibits, cases, containers and other personal property are lodged in the marquee at the risk of the exhibitor. Every care will be taken to ensure their safety but neither Lambeth Council nor the Flower Show Manager will deem itself liable for compensation for any loss or damage.

## 5 Staging of exhibits

The Flower Show Manager will allocate all exhibition space.

**All exhibits must be staged between 6:30pm – 7pm on Friday 20 July 2018 and 8am – 12noon on Saturday 21 July 2018.**

Exhibitors must observe the directions of the Flower Show Manager and stewards and accept full responsibility for the proper staging and safety of their exhibits. Exhibitors must stage their exhibits themselves and must provide their own containers. Any exhibit, which does not conform to the regulations, shall be disqualified and the judge will write on the entry card 'NAS' or 'Not according to schedule'.

## 6 Naming exhibits

All exhibits should be correctly named where possible. Entries where errors have been made in naming the exhibit will not be disqualified, but the judges should regard correctness and clearness of naming as telling in favour of an exhibit in a close competition.

# Regulations

---

## **7 Opening times**

The Flower Show Marquee will open to the public on Saturday 21 July from 2:15pm to 8pm and on Sunday 22 July from 12 noon to 6pm. Please note that the marquee must be vacated by 6pm on Sunday 22 July 2018.

## **8 Removal of exhibits**

Exhibits may not be removed from the show until 6:15pm on Sunday 22 July. At 6:15pm every exhibitor, or their representative with the exhibitor's card, must be present to collect their exhibit.

## **9 Sale of produce**

Produce and any material not removed by 6:30pm will be deemed to be available for sale on Sunday evening.

## **10 Judging**

No exhibitors are allowed into the Flower Show marquee while the judging is in progress. Judging will take place between 12 noon and 1:45pm on Saturday 21 July 2018.

## **11 Protest**

Any protest must be made in writing and delivered to the Flower Show Manager within one hour of the opening of the show to the public, together with a deposit of £5. This sum is returnable in the event of the protest being upheld. A committee of people drawn from local horticultural societies will investigate the protest.

## **12 Floral arrangements**

Exhibitors will be allowed to use accessories, drapes etc. in Section E. Flowers and plant materials must predominate but do not need to have been grown by the exhibitor.

# Regulations

---

## 13 Flower definitions

For the purposes of this show the following definitions will apply:

- A cactus is a succulent plant characterised by the presence of areolas: an areola being a small cushion of woolly-felt or hair from which spines arise.
  - A houseplant is a plant which can be grown in a living room and which remains attractive throughout the year. Succulents qualify, but plants, which die down or lose their leaves, do not.
  - Succulents are plants adapted in stem and leaves to conditions of drought, usually with fleshy leaves and few breathing pores.
  - Plant material – fresh; any living plant material.
- 14
- Natural – fresh and or dried plant material.

## Prizes

Prizes will be awarded in accordance with the show schedule but any prize may be withheld or modified if judges decide the exhibits are unworthy of the prize offered. Prize money of £2 for 1<sup>st</sup> place, £1.50 for 2<sup>nd</sup> place and £1.25 for 3<sup>rd</sup> place will be offered in most classes apart from the following: For classes 63, 64, 65, 66, 67 the prize will be £3 for 1<sup>st</sup> place, £2.50 for 2<sup>nd</sup> place and £2 for 3<sup>rd</sup> place. Prize money will be available at the Flower Show Manager's base located in the Flower Show Marquee, between 6pm and 6:45pm on Saturday 21 July 2018 and 2pm and 5pm on Sunday 22 July 2018.



## Trophies and Awards

---

- Cup for best exhibit in cut flower (classes 1 to 11)
- Award for best rose (classes 5 to 7)
- Rose bowl for best exhibit (classes 12 to 22)
- Shield for best exhibit in cacti and succulent classes (classes 23 to 33)
- Lambeth Council Cup (class 33)
- Cup for best exhibit in bonsai (classes 34 to 40)
- Cup for best tray of vegetables (class 57) or salad vegetables (class 58)
- Cup for best exhibit in vegetable classes (excluding classes 57 and 58)
- Cup for best exhibit in Floral art (classes 63 to 68)
- Cup for best exhibit in children's classes (classes 69 to 72)
- Cup for best exhibit in domestic classes (classes 73 to 78)
- Cup for best exhibit in handicrafts (classes 79 to 83)
- Banksian Medal

## Special Awards

---

### **The Banksian Medal**

This award is presented by the Royal Horticultural Society (RHS) to the winner of the largest total amount of prize money in the horticultural classes. Please note that in accordance with the RHS rules the 2016 (Nick and Sarah Lomax McCusker) and 2017 (Steven Ullah) winners are not eligible to receive the award in 2018.

Prize giving will take place at 12 noon on Sunday 22 July 2018 in the Flower Show Marquee.

# Flower Show Schedule

---

## **Section A. Flower and pot plant exhibits**

- Class 1 Vase of mixed annuals
- Class 2 Vase of dahlia: one stem
- Class 3 Vase of gladiolus: one stem
- Class 4 Vase of flowering shrubs
- Class 5 Vase of three HT roses
- Class 6 Vase of floribunda roses
- Class 7 Vase of one specimen HT rose
- Class 8 Vase of perennials or shrubs, one kind
- Class 9 Vase of sweet peas
- Class 10 Vase of mixed perennials
- Class 11 Vase of mixed garden owners arranged for effect
- Class 12 One flowering pot plant, in a pot no larger than 12.5 cm in diameter excluding saintpaulias
- Class 13 One flowering pot plant, in a container not exceeding 25 cm in diameter excluding saintpaulias, geranium and fuchsia
- Class 14 One fuchsia in a container not exceeding 25cm in diameter
- Class 15 One pelargonium in a container not exceeding 25 cm in diameter.
- Class 16 One planted hanging basket, 30 cm to 45 cm in diameter
- Class 17 A collection of plants growing in a trough not exceeding 75 cm in length
- Class 18 One foliage pot plant in a container not larger than 12.5 cm in diameter
- Class 19 One foliage pot plant in a container not larger than 25 cm in diameter
- Class 20 One houseplant, climbing or trailing
- Class 21 One saintpaulia
- Class 22 Group of indoor plants arranged for decorative effect, to cover space not larger than 45 cm square at the base. Foliage may extend not more than 15 cm beyond the base in any direction except upwards. No accessories allowed

# Flower Show Schedule

---

<b>Section B.</b>	<b>Cacti and succulents exhibits</b>
Class 23	One cactus, in a container not exceeding 8cm in diameter
Class 24	One cactus, in a container not exceeding 12.5 cm in diameter
Class 25	One cactus, in a container not exceeding 25 cm in diameter
Class 26	Three cacti of different species, in separate containers not exceeding 10.5 cm in diameter
Class 27	Three cacti of different species, in separate containers not exceeding 25 cm in diameter
Class 28	One succulent other than cactus, in a container not exceeding 8 cm in diameter
Class 29	One succulent other than cactus, in a container not exceeding 12.5 cm in diameter
Class 30	One succulent other than cactus, in a container not exceeding 25 cm in diameter
Class 31	Three succulents other than cacti, of different species in separate containers not exceeding 10.5 cm in diameter
Class 32	Three succulents other than cacti, of different species in separate containers not exceeding 25 cm in diameter
Class 33	Group of succulents, not excluding cacti, arranged for decorative effect, to cover space not larger than 45 cm square at the base. Foliage may extend not more than 15 cm beyond the base in any direction except upwards. No ornaments allowed

## Flower Show Schedule

---

### **Section C.            Bonsai exhibits (trees in shallow containers)**

Age of trees should be given when known.

- Class 34            Any deciduous tree, British grown, including ginkgo, excluding other deciduous conifers
- Class 35            Any conifer tree, British grown, excluding ginkgo
- Class 36            Rock planting – tree / trees must be planted on or in the rock
- Class 37            Rock planting – root over rock or clasping rock
- Class 38            Group planting – any number of trees in a single container, not to exceed 40 cm
- Class 39            Any evergreen tree, which is not a conifer
- Class 40            Mame bonsai – tree and pot to pass under 15 cm bridge

# Flower Show Schedule

---

## Section D.

## Fruit and vegetables exhibits

Class 41	Potatoes, white, four of any one variety
Class 42	Potatoes, coloured, four of any one variety
Class 43	Carrots, four short or stump rooted
Class 44	Beetroots, three round, 7.5 cm tops
Class 45	French beans, ten pods
Class 46	Tomatoes, five
Class 47	Runner beans, ten pods
Class 48	Onions from sets, dressed, five to be shown
Class 49	Peas, ten pods
Class 50	Onions, five to be shown as grown
Class 51	Shallots, ten, less than 3 cm
Class 52	Cabbage, one with roots
Class 53	Cucumber, one
Class 54	Lettuce, one with roots
Class 55	Any other vegetable not classified in the foregoing classes, space allowed 60 cm by 30 cm (maximum two)
Class 56	One table marrow
Class 57	Collection of four distinct kinds of vegetables, space allowed 60 cm by 60 cm numbers to be staged as for classes 41 to 54
Class 58	Collection of salading, salad vegetables or edible flowers, not exceeding four kinds, space allowed 45cm by 45cm
Class 59	Dish of soft fruit, 12 berries of one kind
Class 60	Dish of soft fruit, 12 strings of currants of one kind
Class 61	Dish of any other fruit
Class 62	Culinary herbs, one vase of three kinds, three stems of each

# Flower Show Schedule

---

## Section E. Floral art exhibits

Open plan tables, no alcoves will be provided, the height is unlimited unless otherwise stated. Exhibitors will be allowed to use accessories, drapes, etc.

Flowers and plant materials must predominate but the exhibitor does not need to have grown them.

Natural plant materials may be used.

**Flowers must be arranged at the show without assistance.**

ENTRIES AFTER SATURDAY 14 JULY 2018  
CANNOT BE ACCEPTED.

Theme: **“Land, Sea and Air”**

All exhibits: space allowed D60 cm x W 60 cm  
x height unlimited. To be staged on open tabling  
75 cm from the ground

Class 63 *“Rainbow’s End”*

Class 64 *“Far-away places”*

Class 65 *“Urban Jungle”*

Class 66 *“By the light of the moon”*

Class 67 *“Gifts of the earth”*

Class 68 A vegetable character (judged by online public vote)

# Flower Show Schedule

---

## **Section F. Children's exhibits**

- Class 69 Vegetable animal (5-15 years)  
Class 70 A painting or drawing on a horticultural theme (ages 4–7 years)  
Class 71 A painting or drawing on a horticultural theme (ages 8–11 years)  
Class 72 A painting or drawing on a horticultural theme (ages 12–14 years)

## **Section G. Domestic exhibits**

- Class 73 One jar of homemade chutney (300–500 g clear glass jar)  
Class 74 One jar of homemade jam (300–500 g clear glass jar)  
Class 75 Fruit Flapjacks (4 pieces to be exhibited) **own recipe**  
Class 76 Handmade bread rolls (5 rolls to be exhibited) **own recipe**  
Class 77 Victoria sponge sandwich containing three hen eggs, raspberry jam filling and caster sugar dusting and baked in a sponge tin no larger than 8 in / 20 cm in diameter  
Class 78 Lancashire Lemon Fingers (5 pieces to be exhibited) as per recipe overleaf

## **Section H. Handicraft exhibits**

- Articles must have been made since the 2017 show
- Class 79 Article of hand knitted wear  
Class 80 Article of machine or hand embroidery  
Class 81 Exhibit of handicraft (type and size of exhibit to be described on entry form)  
Class 82 Photographic exhibit – “Gifts of the Earth”  
Prints up to A5, mounted on card or paper  
Class 83 Painting or drawing up to A3, own choice

# Recipe

---

## **Class 78 Lancashire Lemon Fingers**

- 170g caster sugar
- 170g sieved Self- raising flour
- 170g margarine
- 150g granulated sugar
- Juice and grated zest/rind from 2 lemons
- 2 eggs, beaten

### Method

- 1 Grease and line a baking tin (no larger than 20 cm diameter) with greaseproof paper
- 2 In a bowl beat margarine and caster sugar until pale
- 3 Gradually add beaten eggs
- 4 Fold in grated zest from the lemons with the flour
- 5 Spoon into prepared tin and smooth over top very carefully
- 6 Bake in oven (180 degrees Celsius / 350 degrees Fahrenheit / Gas mark 4) for c.30 minutes
- 7 Leave in the tin to cool for 5 minutes
- 8 Mix lemon juice and granulated sugar together and spread over top of the cake
- 9 Cut into fingers while still warm
- 10 Exhibit five fingers on a plate covered with clear film wrap



## Lambeth Council competitions

---

Judged by the public – voting will close at 6pm on Sunday 22 July and the winner will be announced the following week on social media and via our mailing list.

**CLOSING DATE FOR ENTRIES IS  
SATURDAY 14 JULY 2018.**

Applications to be made online only:  
[www.lambethcountryshow.co.uk/getinvolved](http://www.lambethcountryshow.co.uk/getinvolved)

### **Recycled Garden planting competition**

Last year's winner, Annette Kingsley-Scott, won 1st prize with her incredibly creative '*28 Green Bottles*' that used recycled water bottles in creating an entire small sized garden using the same space as a doormat.

You can use any type of recycled container for your garden; an old wheelbarrow, a shopping crate, a washing up bowl or even an old tyre. You can plant anything from a mini vegetable plot to a flower bed. All successful entries will be displayed over the two days of the show and judged by the public.

### **Scarecrow competition: 'Science and the Cosmos'**

Congratulations to Chesca Rogers for creating 'The Gruffal-crow' as her 'Children's Book Character'. A clear favourite with the LCS crowd in 2017.

This year, we're celebrating all things "Science and the Cosmos". There's no denying that science and space is a hot topic right now. We want to see your favourite astronauts, space missions, inspirational scientists and more. It's time to get your scientific thinking caps on and be as creative as possible.

**1st prize for each competition is £100 in vouchers. Entry is free.**

# Application Notes

---

- Flower Show entries are free of charge if submitted by Saturday 14 July 2018. You can now apply online:  
**[www.lambethcountryshow.co.uk/getinvolved](http://www.lambethcountryshow.co.uk/getinvolved)**  
  
Alternatively, please post or deliver your entry to:  
**Hon. Secretary, Lambeth Horticultural Society,  
c/o 32 Chatsworth Way, West Norwood, London SE27 9HN**
- If you are entering 10 or more exhibits, you are entitled to a free parking pass. If this applies to you, please submit your vehicle details when applying. You will be asked to submit your vehicle make and model, as well as its registration number. For security reasons, if we do not have this information in advance, the organisers are not able to permit you access to the park.
- Exhibits must be removed between 6:15pm and 6:30pm on Sunday 22 July 2018. Any exhibits left after this time will be deemed as suitable for sale.
- No vehicle movement is permitted on site for the collection of exhibits until the end of the show, when the site is deemed safe by the Event Safety Officer.
- For more information visit:  
**[www.lambethcountryshow.co.uk/getinvolved](http://www.lambethcountryshow.co.uk/getinvolved)**  
email: **[countryshow@lambeth.gov.uk](mailto:countryshow@lambeth.gov.uk)**  
or call: **020 7926 7085**

# Flower Show 2018 Entry Form

---

**Please circle the number of the classes you wish to enter:**

1	2	3	4	5	6	7	8	9	10
11	12	13	14	15	16	17	18	19	20
21	22	23	24	25	26	27	28	29	30
31	32	33	34	35	36	37	38	39	40
41	42	43	44	45	46	47	48	49	50
51	52	53	54	55	56	57	58	59	60
61	62	63	64	65	66	67	68	69	70
71	72	73	74	75	76	77	78	79	80
81	82	83							

**Free parking pass application details (see previous page):**

vehicle make / model \_\_\_\_\_

vehicle registration \_\_\_\_\_

**I have read and agree to abide by the regulations as printed in the 2018 Flower Show Schedule and Regulations:**

signed \_\_\_\_\_

name \_\_\_\_\_

address \_\_\_\_\_

phone \_\_\_\_\_

email \_\_\_\_\_

**Please outline type and size of exhibit if entering class 81:**

\_\_\_\_\_



**#LCS18**

**[www.lambethcountryshow.co.uk](http://www.lambethcountryshow.co.uk)**

**[countryshow@lambeth.gov.uk](mailto:countryshow@lambeth.gov.uk)**

**020 7926 7085**

Funded and organised by



In association with

