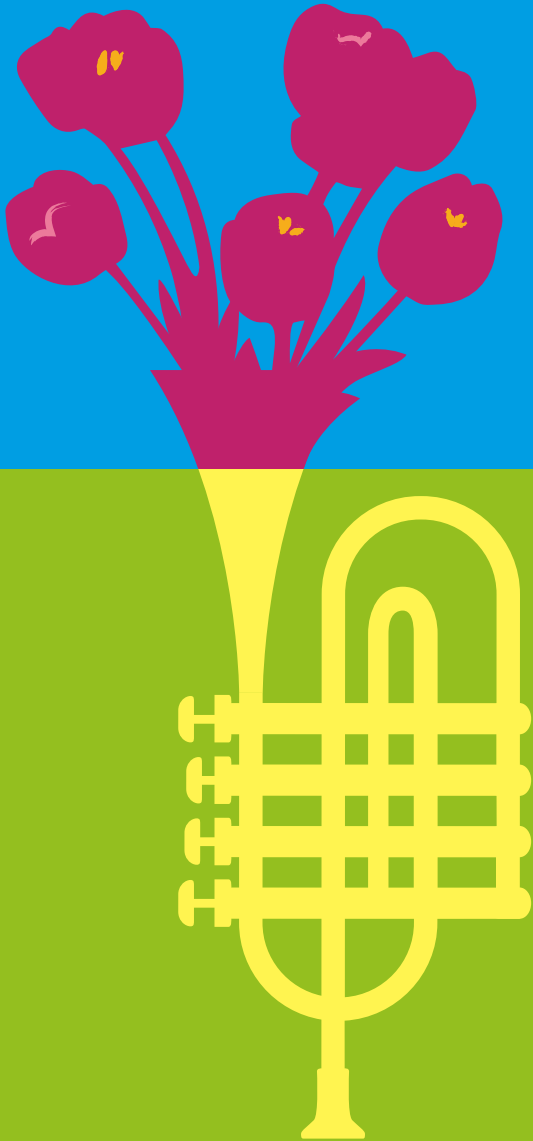


CLOSING  
DATE FOR  
ENTRIES:  
SATURDAY  
8 JULY



# Flower Zone Schedule 2017

Saturday 15 –  
Sunday 16 July

Brockwell Park

# Contents

---

- 3 Welcome!
- 4 2016 Winners and Trophies
- Regulations**

---

- 5 Eligibility
- Entries
- 6 Ownership of exhibits
- Liability and Loss
- Staging of exhibits
- Naming exhibits
- 7 Opening times
- Removal of exhibits
- Sale of produce
- Judging
- Protest
- Floral arrangements
- 8 Flower definitions
- Prizes
- 9 Trophies and Awards
- Special Awards
- Flower Schedule**

---

- 10 A: Flower and pot plant exhibits
- 11 B: Cacti and succulents exhibits
- 12 C: Bonsai exhibits
- 13 D: Fruit and vegetables exhibits
- 14 E: Floral art exhibits
- 15 F: Children's exhibits
- G: Domestic exhibits
- H: Handicraft exhibits
- 16 Recipe
- 17 Lambeth Council competitions
- 18 Application notes
- 19 Entry form

## Welcome!

---

“ **Welcome to the 43rd edition of the Lambeth Country Show Flower Show Schedule, produced in partnership with the Lambeth Horticultural Society (LHS).**

This show remains one of the best free family events in the south east of England and we are proud to continue our partnership with LHS in producing this year's Flower Show Schedule. Entries are open to amateurs only and I'm very much looking forward to seeing the creative sorts that contribute so much to the fantastic atmosphere in the Flower Zone overall.

As well as the wonderful array of horticultural exhibits in the main marquee, 2017 will again see the return of the Scarecrow and Recycled Garden competitions. If you're feeling inspired after last year's exhibits, entry to these competitions are once again free of charge and 1st prize is £100.

With the huge variety of established favourites, there is something for everyone to get involved with at this year's show – even jams, chutneys, cakes and handicrafts.

We will also be supporting the Trussell Trust food banks once more this year too. Please show your support by bringing your non-perishable foods to the Flower Show marquee on either day.

I hope to see you in July and wish you all the best of luck!

”

**Councillor Marcia Cameron - Mayor of Lambeth**

## 2016 Winners and Trophies

---

- Cup for best exhibit in cut flower (classes 1 to 11)  
**Brockwell Park Community Greenhouses**
- Award for best rose (classes 5 to 7)  
**St James Church**
- Rose bowl for best exhibit (classes 12 to 22)  
**Nick and Sarah Lomax McCusker**
- Shield for best exhibit in cacti and succulent classes  
(classes 23 to 34)  
**Valerie Lambert**
- Lambeth Council Cup (class 34)  
**Benedict Pizzoferro**
- Cup for best exhibit in bonsai (classes 35 to 42)  
**Robert Edgar**
- Cup for best tray of vegetables (class 57)  
or salad vegetables (class 58)  
**Nick and Sarah Lomax McCusker**
- Cup for best exhibit in vegetable classes  
(excluding classes 59 and 60)  
**Thomas Harvey**
- Cup for best exhibit in floral art (classes 65 to 69)  
**Will Kerr**
- Cup for best exhibit in children's classes (classes 71 to 74)  
**Katrina Williamson**
- Cup for best exhibit in domestic classes (classes 75 to 80)  
**Glen Wellman**
- Cup for best exhibit in handicrafts (classes 81 to 85)  
**Rebecca Stevenson**
- Banksian Medal  
**Nick and Sarah Lomax McCusker**

# Regulations

---

- The rules applied by the show organisers are those laid down in the code of rules of the Royal Horticultural Society and the NAFAS competitions manual, third edition 2015.
- Decisions made by the Flower Show Manager are final.

## **1 Eligibility**

All classes of the competition are open to amateur exhibitors only.

## **2 Entries**

Only one entry per class is allowed. Lambeth Council or the Flower Show Manager reserves the right to refuse any entry and are not required to provide a reason or explanation. Exhibitors must report to the Flower Show Manager's office, located in the Flower Zone marquee, to collect an exhibitor's card which must then be placed face down in front of the exhibit after checking that the description on the card is accurate.

**Applications must be submitted by  
Saturday 8 July 2017**

Online:

**[www.lambethcountryshow.co.uk/getinvolved](http://www.lambethcountryshow.co.uk/getinvolved)**

By post / in person to:

**Hon. Secretary  
Lambeth Horticultural Society  
c/o 32 Chatsworth Way  
West Norwood  
London SE27 9HN**

Late entries are only accepted at the discretion of the Flower Show Manager, and will be charged at £2 per entry on the day.

# Regulations

---

## 3 Ownership of exhibits

All exhibits must be the property of and grown by the exhibitor for at least two months prior to the show, excluding entries for Section E. All exhibits should be exhibited in the name of an individual.

## 4 Liability and Loss

All exhibits, cases, containers and other personal property are lodged in the marquee at the risk of the exhibitor. Every care will be taken to ensure their safety but neither Lambeth Council nor the Flower Show Manager will deem itself liable for compensation for any loss or damage.

## 5 Staging of exhibits

The Flower Show Manager will allocate all exhibition space.

**All exhibits must be staged between 6:30pm – 7pm on Friday 14 July 2017 and 8am and 12noon on Saturday 15 July 2017.** Exhibitors must observe the directions of the Flower Show Manager and stewards and accept full responsibility for the proper staging and safety of their exhibits. Exhibitors must stage their exhibits themselves and must provide their own containers. Any exhibit, which does not conform to the regulations, shall be disqualified and the judge will write on the entry card 'NAS' or 'Not according to schedule'.

## 6 Naming exhibits

All exhibits should be correctly named where possible. Entries where errors have been made in naming the exhibit will not be disqualified, but the judges should regard correctness and clearness of naming as telling in favour of an exhibit in a close competition.

# Regulations

---

## **7 Opening times**

The Flower Show Marquee will open to the public on Saturday 15 July from 2:15pm to 8pm and on Sunday 16 July from 12noon to 6pm. Please note that the marquee must be vacated by 6pm on Sunday 16 July 2017.

## **8 Removal of exhibits**

Exhibits may not be removed from the show until 6:15pm on Sunday 16 July. At 6:15pm every exhibitor, or their representative with the exhibitor's card must be present to collect their exhibit.

## **9 Sale of produce**

Produce and any material not removed by 6:30pm will be deemed to be available for sale on Sunday evening.

## **10 Judging**

No exhibitors are allowed into the Flower Zone marquee while the judging is in progress. Judging will take place between 12:15pm and 2:15pm on Saturday 15 July 2017.

## **11 Protest**

Any protest must be made in writing and delivered to the Flower Show Manager within one hour of the opening of the show to the public, together with a deposit of £5. This sum is returnable in the event of the protest being upheld. A committee of people drawn from local horticultural societies will investigate the protest.

## **12 Floral arrangements**

Exhibitors will be allowed to use accessories, drapes etc. in Section E. Flowers and plant materials must predominate but do not need to have been grown by the exhibitor.

# Regulations

---

## 13 Flower definitions

For the purposes of this show the following definitions will apply:

- A cactus is a succulent plant characterised by the presence of areolas: an areola being a small cushion of woolly-felt or hair from which spines arise.
- A houseplant is a plant which can be grown in a living room and which remains attractive throughout the year. Succulents qualify, but plants, which die down or lose their leaves, do not.
- Succulents are plants adapted in stem and leaves to conditions of drought, usually with fleshy leaves and few breathing pores.
- Plant material – fresh; any living plant material.
- Natural – fresh and or dried plant material.

## 14 Prizes

Prizes will be awarded in accordance with the show schedule but any prize may be withheld or modified if judges decide the exhibits are unworthy of the prize offered. Prize money of £2 for 1st place, £1.50 for 2nd place and £1.25 for 3rd place will be offered in most classes apart from the following: For classes 63, 64, 65, 66, 67 the prize will be £3 for 1st place, £2.50 for 2nd place and £2 for 3rd place. Prize money will be available at the Flower Show Manager's base, located in the Flower Zone marquee, between 6pm and 6:45pm on Saturday and 2pm and 5pm on Sunday.



## Trophies and Awards

---

- Cups for best exhibit in 'cut flower' classes (classes 1 to 11)
- Rose bowl for best exhibit (classes 12 to 22)
- Cup for best rose (classes 5, 6 and 7)
- Cup for best tray of vegetables (class 57) or salad vegetables (class 58)
- Cup for best exhibit in 'fruit and vegetable' classes (excluding classes 57 and 58)
- Cup for best exhibit in 'bonsai' classes
- Cup for best exhibit in 'floral art' classes
- Cup for best exhibit in 'handicrafts'
- Cup for best exhibit in 'domestic' classes
- Shield for best exhibit in 'cactus and succulent' (classes 23-33)
- Cup for best society stand
- Cup for best exhibit in the children's classes
- Lambeth Council Cup for winner in class 33 Special Awards

## Special Awards

---

### **The Banksian Medal**

This award is presented by the Royal Horticultural Society (RHS) to the winner of the largest total amount of prize money in the horticultural classes. Please note that in accordance with the RHS rules the 2015 (Benedict Pizzoferro) and 2016 (Nick and Sarah Lomax McCusker) winners are not eligible to receive the award in 2017.

Presentations will take place at 12 noon on Sunday 16 July 2017 in the Flower Zone marquee.

# Flower Show Schedule

---

## Section A. Flower and pot plant exhibits

- Class 1 Vase of mixed annuals
- Class 2 Vase of dahlia: one stem
- Class 3 Vase of gladiolus: one stem
- Class 4 Vase of flowering shrubs
- Class 5 Vase of three HT roses
- Class 6 Vase of floribunda roses
- Class 7 Vase of one specimen HT rose
- Class 8 Vase of perennials or shrubs, one kind
- Class 9 Vase of sweet peas
- Class 10 Vase of mixed perennials
- Class 11 Vase of mixed garden flowers arranged for effect
- Class 12 One flowering pot plant, in a pot no larger than 12.5 cm in diameter excluding saintpaulias
- Class 13 One flowering pot plant, in a container not exceeding 25 cm in diameter excluding saintpaulias, geranium and fuchsia
- Class 14 One fuchsia in a container not exceeding 25 cm in diameter
- Class 15 One pelargonium in a container not exceeding 25 cm in diameter
- Class 16 One planted hanging basket, 30 cm to 45 cm in diameter
- Class 17 A collection of plants growing in a trough not exceeding 75 cm in length
- Class 18 One foliage pot plant in a container not larger than 12.5 cm in diameter
- Class 19 One foliage pot plant in a container not larger than 25 cm in diameter
- Class 20 One houseplant, climbing or trailing
- Class 21 One saintpaulia
- Class 22 Group of indoor plants arranged for decorative effect, to cover space not larger than 45 cm square at the base. Foliage may extend not more than 15 cm beyond the base in any direction except upwards. No accessories allowed.

# Flower Show Schedule

---

## Section B. Cacti and succulents exhibits

- Class 23 One cactus, in a container not exceeding 8 cm in diameter
- Class 24 One cactus, in a container not exceeding 12.5 cm in diameter
- Class 25 One cactus, in a container not exceeding 25 cm in diameter
- Class 26 Three cacti of different species, in separate containers not exceeding 10.5 cm in diameter
- Class 27 Three cacti of different species, in separate containers not exceeding 25 cm in diameter
- Class 28 One succulent other than cactus, in a container not exceeding 8 cm in diameter
- Class 29 One succulent other than cactus, in a container not exceeding 12.5 cm in diameter
- Class 30 One succulent other than cactus, in a container not exceeding 25 cm in diameter
- Class 31 Three succulents other than cacti, of different species in separate containers not exceeding 10.5 cm in diameter
- Class 32 Three succulents other than cacti, of different species in separate containers not exceeding 25 cm in diameter
- Class 33 Group of succulents, not excluding cacti, arranged for decorative effect, to cover space not larger than 45 cm square at the base. Foliage may extend not more than 15 cm beyond the base in any direction except upwards. No ornaments allowed.

# Flower Show Schedule

---

## **Section C. Bonsai exhibits (trees in shallow containers)**

- Age of trees should be given when known.
- Class 34 Any deciduous tree, British grown, including ginko, excluding other deciduous conifers
- Class 35 Any conifer tree, British grown, excluding ginko
- Class 36 Rock planting – tree / trees must be planted on or in the rock
- Class 37 Rock planting – root over rock or clasping rock
- Class 38 Group planting – any number of trees in a single container, not to exceed 40 cm
- Class 39 Any evergreen tree, which is not a conifer
- Class 40 Mame bonsai – tree and pot to pass under 15 cm bridge

# Flower Show Schedule

---

## Section D. Fruit and vegetables exhibits

- Class 41 Potatoes, white, four of any one variety
- Class 42 Potatoes, coloured, four of any one variety
- Class 43 Carrots, six short or stump rooted
- Class 44 Beetroots, three round, 7.5 cm tops
- Class 45 French beans, ten pods
- Class 46 Tomatoes, five
- Class 47 Runner beans, ten pods
- Class 48 Onions from sets, dressed, five to be shown
- Class 49 Peas, ten pods
- Class 50 Onions, five to be shown as grown
- Class 51 Shallots, ten, less than 3 cm
- Class 52 Cabbage, one with roots
- Class 53 Cucumber, one
- Class 54 Lettuce, one with roots
- Class 55 Any other vegetable not classified in the foregoing classes, space allowed 60 cm by 30 cm (maximum two)
- Class 56 One table marrow
- Class 57 Collection of four distinct kinds of vegetables, space allowed 60 cm by 60 cm numbers to be staged as for Classes 43 to 54
- Class 58 Collection of salading and salad vegetables not exceeding four kinds, space allowed 45 cm by 45 cm
- Class 59 Dish of soft fruit, 12 berries of one kind
- Class 60 Dish of soft fruit, 12 strings of currants of one kind
- Class 61 Dish of any other fruit
- Class 62 Culinary herbs, 1 vase of three kinds, 3 stems of each

# Flower Show Schedule

---

## Section E. Floral art exhibits

Open plan tables, no alcoves will be provided, the height is unlimited unless otherwise stated. Exhibitors will be allowed to use accessories, drapes, etc. Flowers and plant materials must predominate but the exhibitor does not need to have grown them. Flowers must be arranged at the show without assistance. Natural plant materials may be used. **NO LATE ENTRIES: ENTRIES SUBMITTED AFTER SATURDAY 8 JULY CANNOT BE ACCEPTED.**

Theme: **“Read All About It”**

Class 63 *“Front Page Headlines”*

An exhibit. Space allowed 60 cm width, 60 cm depth, height unlimited. Staged on tabling 75 cm from the ground. Title card to be included

Class 64 *“Garden News”*

An exhibit to include 3 terracotta flower pots  
Space allowed 60 cm width, 60 cm depth, height unlimited.  
Staged on tabling 75 cm from the ground

Class 65 *“Holiday Destination”*

An exhibit. Space allowed 60 cm width, 60 cm depth, height unlimited. Staged on tabling 75 cm from the floor. Title card to be included

Class 66 *“Sporting Event”*

An exhibit. Ground space allowed 100 cm width, 100 cm depth, height unlimited. To be viewed all round but judged from front. Competitor may provide own base. Titled card to be included

Class 67 *“Culture Highlights”*

An exhibit. Space allowed 60 cm width, 60cm depth, height unlimited. Staged on open tabling. Title card to be included

# Flower Show Schedule

---

Class 68 A vegetable character (judged by online public vote).

## Section F. Children's exhibits

Class 69 Vegetable animal (5-15 years)

Class 70 A painting or drawing on a horticultural theme  
(ages 4-7 years)

Class 71 A painting or drawing on a horticultural theme  
(ages 8-11 years)

Class 72 A painting or drawing on a horticultural theme  
(ages 12-14 years)

## Section G. Domestic exhibits

Class 73 One jar of homemade chutney (300-500 g clear glass jar)

Class 74 One jar of homemade jam (300-500 g clear glass jar)

Class 75 Rock cakes (3 must be exhibited), own recipe

Class 76 Malt loaf (the whole loaf must be exhibited),  
own recipe

Class 77 Somerset Apple Cake. USE RECIPE OVERLEAF

Class 78 8 inch decorated cake (judged solely for decoration),  
own recipe

## Section H. Handicraft exhibits

Articles must have been made since the 2016 show.

Class 79 Article of hand knitted wear

Class 80 Article of machine or hand embroidery

Class 81 Exhibit of handicraft

Class 82 Photographic section – *“Local Landmark”*  
Prints up to A5, mounted on card or paper

Class 83 Painting or drawing up to A3, entrants' own choice

# Recipe

---

## **Class 77 Somerset Apple Cake**

- 3 oz / 85 g butter
- 6 oz / 170 g castor sugar
- 1 orange rind, grated
- 8 oz / 225 g self raising flour
- 1 lb / 450 g Bramley apples, peeled, cored and cubed
- 2 eggs, beaten
- 2 tablespoons milk
- Approx. 1 oz / 25 g candied peel, chopped
- About 1 tablespoon granulated sugar

### Method

- 1 Grease and flour an 8 inch / 20 cm round cake tin
- 2 Cream butter, sugar and orange rind and beat until light and creamy
- 3 Mix 1 tablespoonful of the flour with cubed apples in a dish
- 4 Put eggs, milk in a bowl with creamed butter
- 5 Add remaining flour, candied peel and apples to the creamed mixture and blend well with a metal spoon
- 6 Turn into prepared tin, sprinkle with granulated sugar
- 7 Cook at 350°F, gas mark 4, 180°C (conventional), 160°C (fan) for 40 to 50 minutes until golden brown
- 8 Serve cold as a cake



## Lambeth Council competitions

---

Judged by the public – voting will close at 6pm on Sunday and the winner will be announced the following week on social media and our mailing list.

### **CLOSING DATE FOR ENTRIES IS SATURDAY 8 JULY 2017.**

Applications to be made online only:  
[www.lambethcountryshow.co.uk/getinvolved](http://www.lambethcountryshow.co.uk/getinvolved)

### **Recycled Garden planting competition**

Last year's winner, Sue Wallace, won first prize with her incredibly creative '*Re-Hydro Mop & Pail Salad / Herb Bar*'. Recycled items included an old mop pail, solar powered water pump and plastic bottles.

You can use any type of recycled container for your garden; an old wheelbarrow, a shopping crate, a washing up bowl or even an old tyre. You can plant anything from a mini vegetable plot to a flower bed. All successful entries will be displayed over the two days of the show and judged by the public.

*The 1st prize is £100 high street gift voucher. Entry is free.*

### **Scarecrow competition**

Congratulations once again to our 2016 winners – Eva, Heidi, Rosie & Seren Rodgers for creating '*RIODEEMER - Celebrating the sights of Rio and the spirit of the Olympics!*'

This year's theme is '*Children's Book Characters*'.

We want to see your favourite heroes, underdogs, wizards, witches and fairy tale characters. Time to get creative.

*The 1st prize is £100 high street gift voucher. Entry is free.*

# Application Notes

---

- Flower Show entries are free of charge if submitted by Saturday 8 July 2017. You can now apply online:  
**[www.lambethcountryshow.co.uk/getinvolved](http://www.lambethcountryshow.co.uk/getinvolved)**  
  
Alternatively, please post or deliver your entry to:  
**Hon. Secretary, Lambeth Horticultural Society,  
c/o 32 Chatsworth Way, West Norwood, London SE27 9HN**
- Late entries are only accepted at the discretion of the Flower Show Manager and will be charged at £2 per entry on the day.
- If you are exhibiting, you are entitled to purchase a parking pass at £20 for the weekend. Please contact Lambeth Country Show Team on:
  - Email: **[countryshow@lambeth.gov.uk](mailto:countryshow@lambeth.gov.uk)**
  - Telephone: **020 7926 7085**
- If you are entering 10 or more exhibits, you are entitled to a free parking pass. **If this applies to you, please submit your vehicle details overleaf (page 17).** *Your vehicle pass will be confirmed with you before the show.*  
  
Vehicle makes and registration numbers will be required by no later than Saturday 8 July 2017 otherwise access on to site will not be granted by the events team for security reasons.
- Exhibits must be removed between 6:15pm and 6:30pm on Sunday 16 July 2017. Any exhibits left after this time will be deemed as suitable for sale by the LHS.
- No vehicle movement is permitted on site for the collection of exhibits until the end of the show, when the site is deemed safe by the Event Safety Officer.

# Flower Zone 2017 Entry Form

---

## I wish to enter the following classes

*(please circle the number of the classes you wish to enter):*

1	2	3	4	5	6	7	8	9	10
11	12	13	14	15	16	17	18	19	20
21	22	23	24	25	26	27	28	29	30
31	32	33	34	35	36	37	38	39	40
41	42	43	44	45	46	47	48	49	50
51	52	53	54	55	56	57	58	59	60
61	62	63	64	65	66	67	68	69	70
71	72	73	74	75	76	77	78	79	80
81	82	83	84	85					

## Free parking pass application details (see previous page):

vehicle make / model \_\_\_\_\_

vehicle registration \_\_\_\_\_

## I have read and agree to abide by the regulations governing the Lambeth Flower Show as printed in the 2017 Flower Show Schedule and Regulations:

signed \_\_\_\_\_

name \_\_\_\_\_

address \_\_\_\_\_

\_\_\_\_\_

\_\_\_\_\_

phone \_\_\_\_\_

email \_\_\_\_\_



**#LCS17**  
**[www.lambethcountryshow.co.uk](http://www.lambethcountryshow.co.uk)**  
**[countryshow@lambeth.gov.uk](mailto:countryshow@lambeth.gov.uk)**  
**020 7926 7085**

Funded and organised by



In association with

